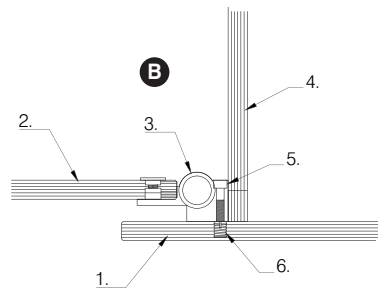
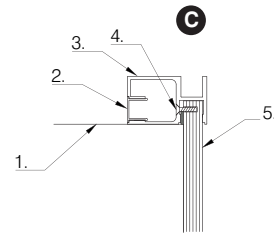


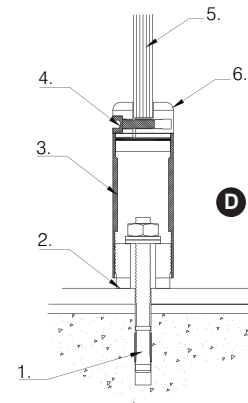
- A Connect Lock Detail**
- 1 - Compact grade laminate fascia
 - 2 - Aluminium receiver
 - 3 - Nylon tip.
 - 4 - Aluminium finger.
 - 5 - Aluminium lock body.
 - 6 - Compact grade laminate door.
 - 7 - Aluminium indicator plate.



- B Connect Hinge Detail**
- 1 - Compact grade laminate fascia.
 - 2 - Compact grade laminate door.
 - 3 - Aluminium hinge.
 - 4 - Compact grade laminate divider panel.
 - 5 - Cap head set screw.
 - 6 - Brass insert.



- C Connect Head Rail Section Detail**
- 1 - Divider panel.
 - 2 - Aluminium clip-in profile.
 - 3 - Connect aluminium head section.
 - 4 - Screw.
 - 5 - Compact grade laminate fascia.



- D Connect Foot Section Detail**
- 1 - Fixing bolt.
 - 2 - Nylon rosette.
 - 3 - Aluminium foot section.
 - 4 - Cap head socket screw.
 - 5 - Compact grade laminate divider.
 - 6 - Aluminium foot clamp.



Door Lock



Door Hinge



Head Rail



Foot

CONNECT
Technical

