

WARNING!!!!

**DO NOT DRAG LAMINATE OFF THE
PALLET AS THIS WILL CAUSE
DAMAGE/SCRATCHES TO THE
PANELS UNDERNEATH.**

**PLEASE LIFT ALL PANELS FROM
THE 4 CORNERS.**

T: 01709 388 338

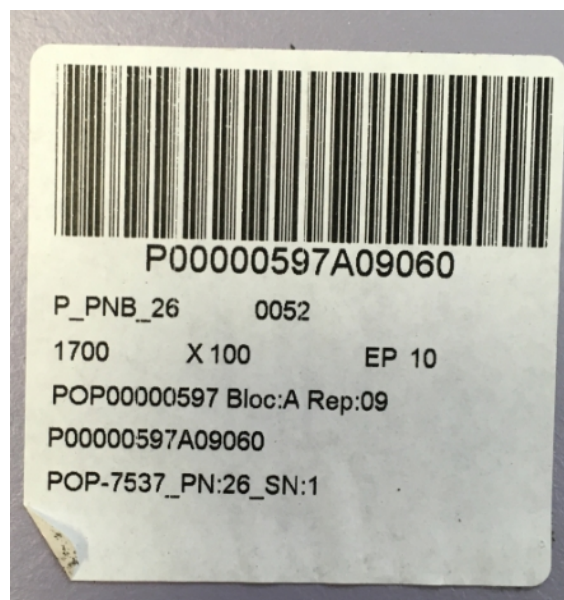
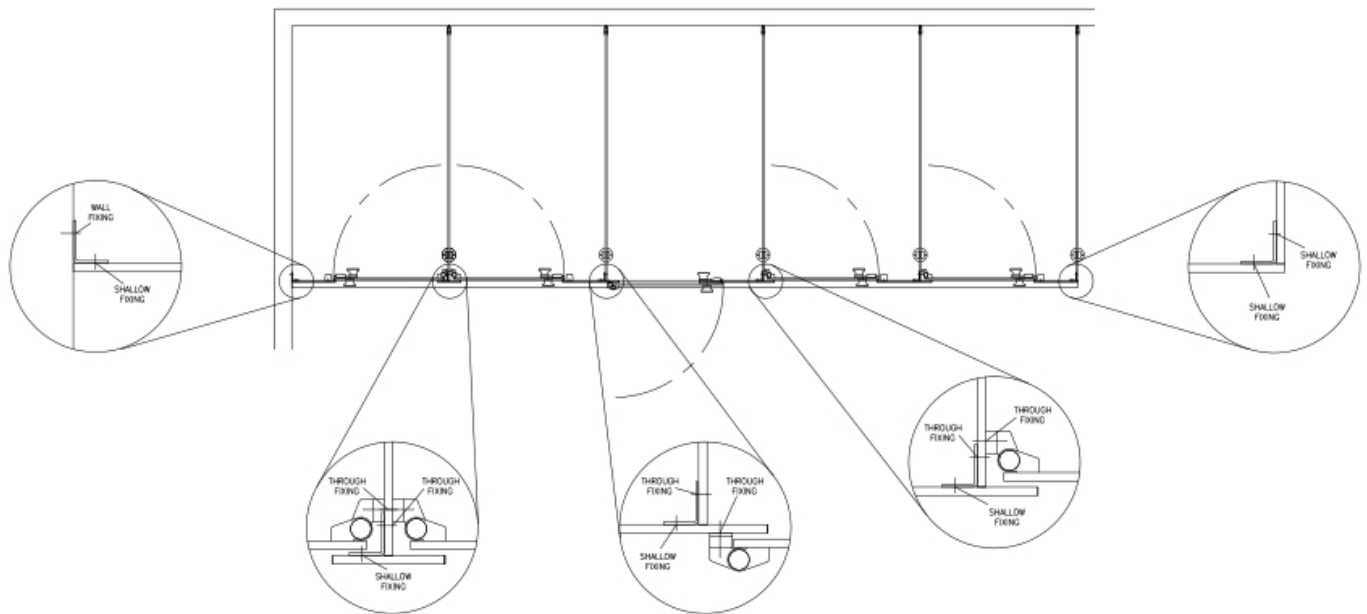
E: Sales@CubiclesDirect.co.uk

W: www.CubiclesDirect.co.uk

P: 1



Cabine Eco Cubicle System – Installation Instructions



PN: = PANEL NUMBER

Refer to Project Drawings. This sticker will be on all 10mm Panels for you Project

T: 01709 388 338

E: Sales@CubiclesDirect.co.uk

W: www.CubiclesDirect.co.uk

P: 2

Important Information

- An inventory of items delivered/collected must be conducted within the 1st 5 working days of receiving the goods. All damaged or missing parts **MUST BE REPORTED WITHIN THIS TIME**. Any request for missing parts after this date will require an additional purchase order.
- We would strongly recommend **NOT** opening all KITS simultaneously, please open them as requested through the installation instructions.

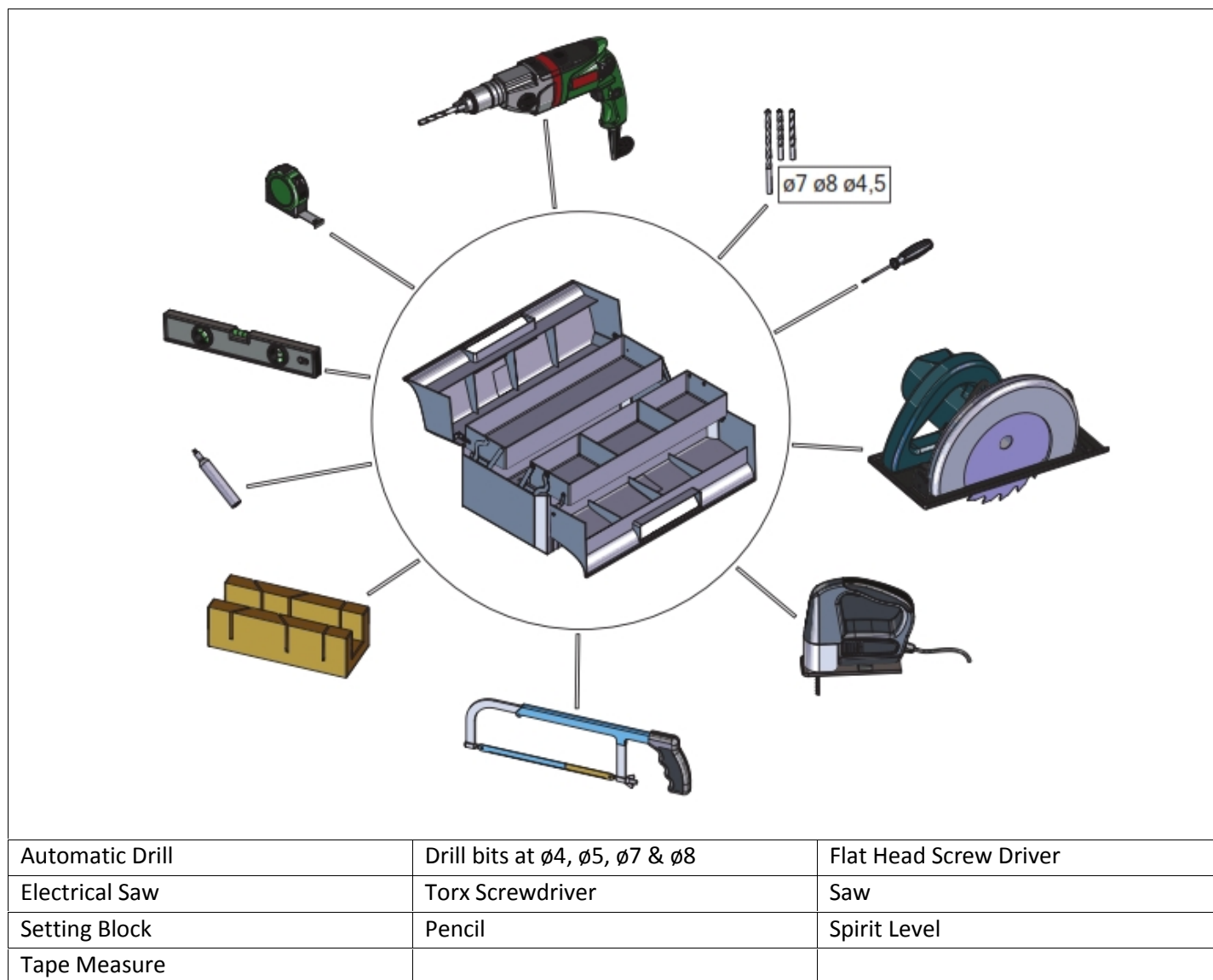
Preliminary Recommendation

- Screws and wall plugs are made for concrete walls and floors. In case of other materials, the customer must provide suitable fixings.
- Panels will have to be adjusted and drilled on site.
- Headrails have to be adjusted on site.
- To avoid panels warping, panels must be stored:-
 - Horizontally without a cantilever bracket support.
 - Indoors in a dry place.
 - Between temperatures of 5° and 30°.
 - Installation must be done as soon as possible.

Table of Contents

• General Cubicle Arrangement	2
• Important Information	3
• Toolbox	4
• Installation Site Set Out	5
• Cubicle Partition Installation	6
• Cubicle Pilaster to Partition Installation	7
• Cubicle Pilaster to Wall Installation	10
• Headrail Installation	12
• Adjustment and Tightening	14
• Hinge and Door Installation	15
• Lock and Keep Installation	19
• Stiffener Post and Foot	20

Equipment Required for Installation



T: 01709 388 338

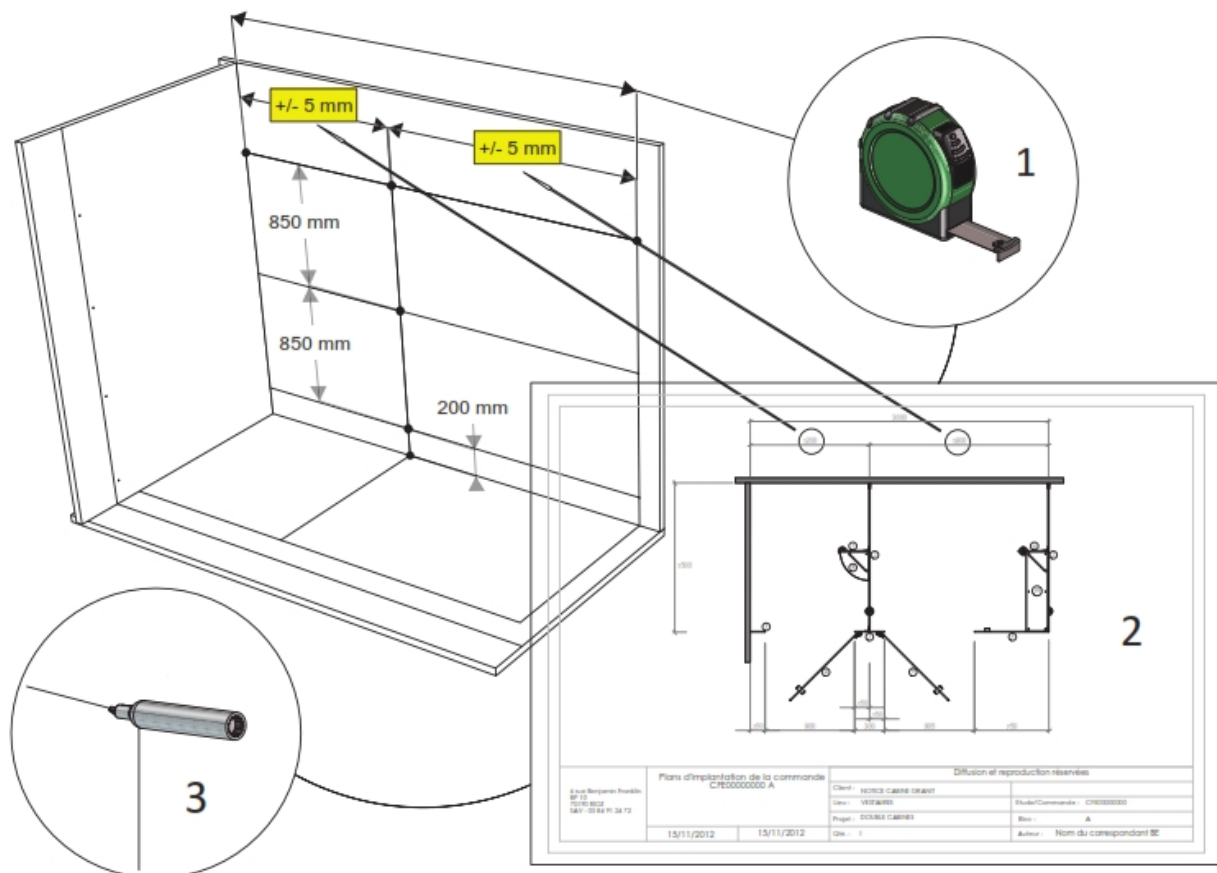
E: Sales@CubiclesDirect.co.uk

W: www.CubiclesDirect.co.uk

P: 4

Installation Site Set Out

Use the job specific drawings provided to you to mark out the layout of the cubicles. If site dimensions provided to Cubicles Direct are different to those present on site you will either have to make adjustments to the panels or order new panels.



As shown above, we would recommend that you mark out the following:-

- Cubicle Centre Positions
- Cubicle Front Wall Position
- Height of Floor Clearance Required – Must be between 100mm and 140mm FFL
- Partition Foot Position – Set 160mm back from the cubicle front wall line
- Pilaster to Wall Position

T: 01709 388 338

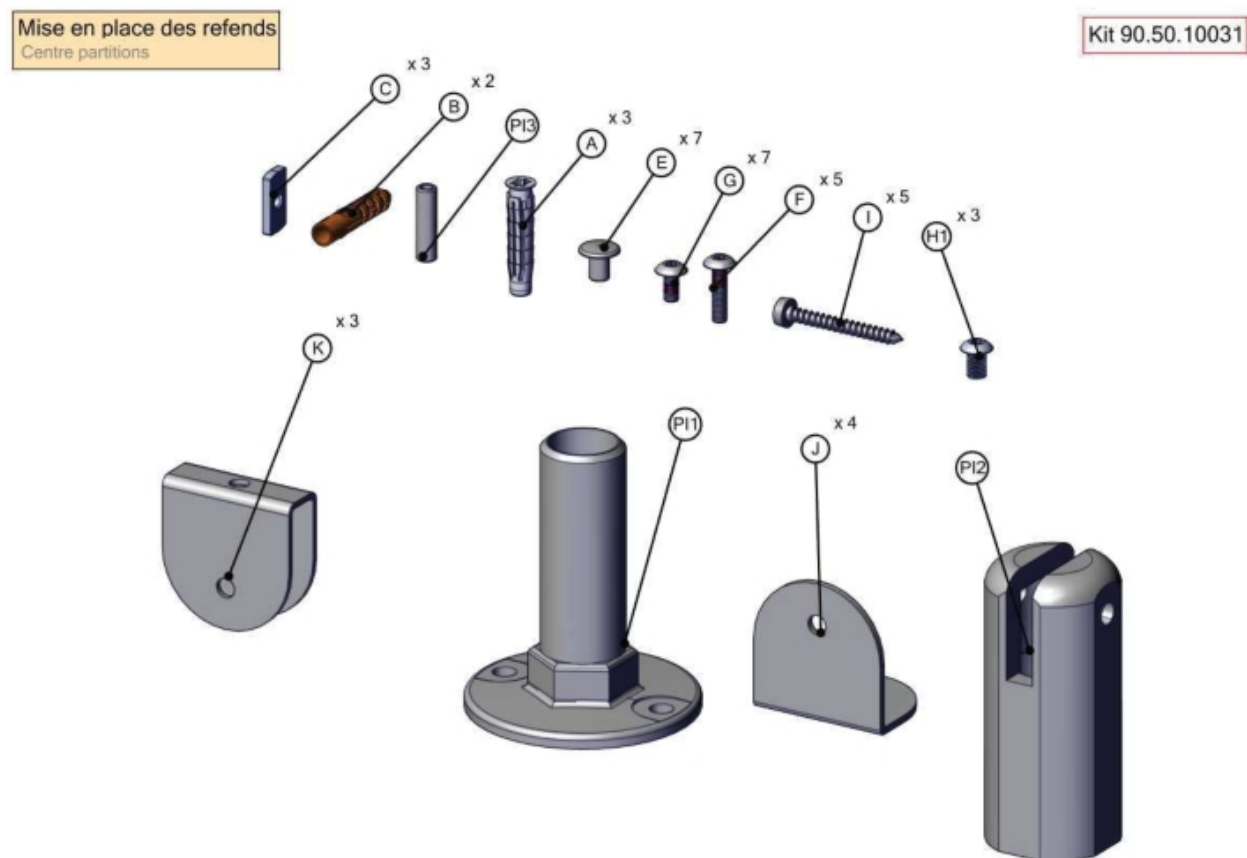
E: Sales@CubiclesDirect.co.uk

W: www.CubiclesDirect.co.uk

P: 5

Cubicle Partition Installation

Please open KIT 90.50.10031. Included within this KIT you will find a foot and fixings, rear wall brackets and fixings and pilaster brackets and fixings as shown below.



Fix the 3 Wall Brackets 'K' where you've marked the cubicle centre lines and place the foot in the partition foot position. **PLEASE DO NOT FIX THE FOOT IN PLACE AT THIS POINT AS YOU MAY NEED TO MAKE ADJUSTMENTS LATER.**

FOR PARTITION PANELS WITH HINGES, THE LOWER HINGE HOLES WILL BE 200mm FROM THE BOTTOM PANEL.

To secure the foot, use either a $\varnothing 7$ or a $\varnothing 8$ drill bit, drill through the laminate partition. Hand screw 1 Fixing 'F' into 'P13' and push through the foot bracket hole into the newly drilled hole. Now place a 2nd Fixing 'F' screw into the opposite side of the foot bracket hole, and tighten until the foot bracket is securely attached to the cubicle partition.

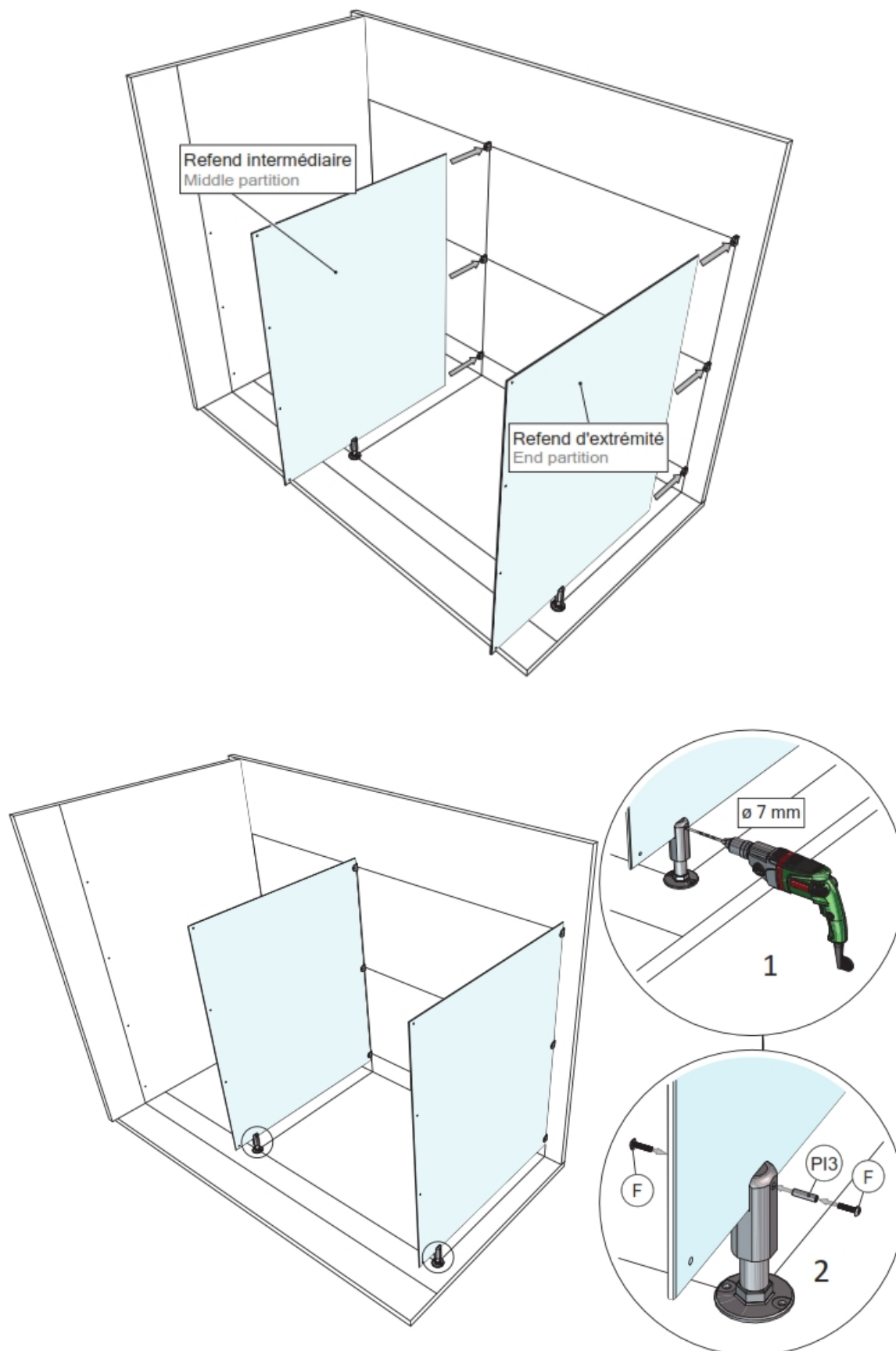
Repeat this process with all cubicle partitions within this run of cubicles.

T: 01709 388 338

E: Sales@CubiclesDirect.co.uk

W: www.CubiclesDirect.co.uk

P: 6



T: 01709 388 338

E: Sales@CubiclesDirect.co.uk

W: www.CubiclesDirect.co.uk

P: 7

Cubicle Pilaster to Partition Installation

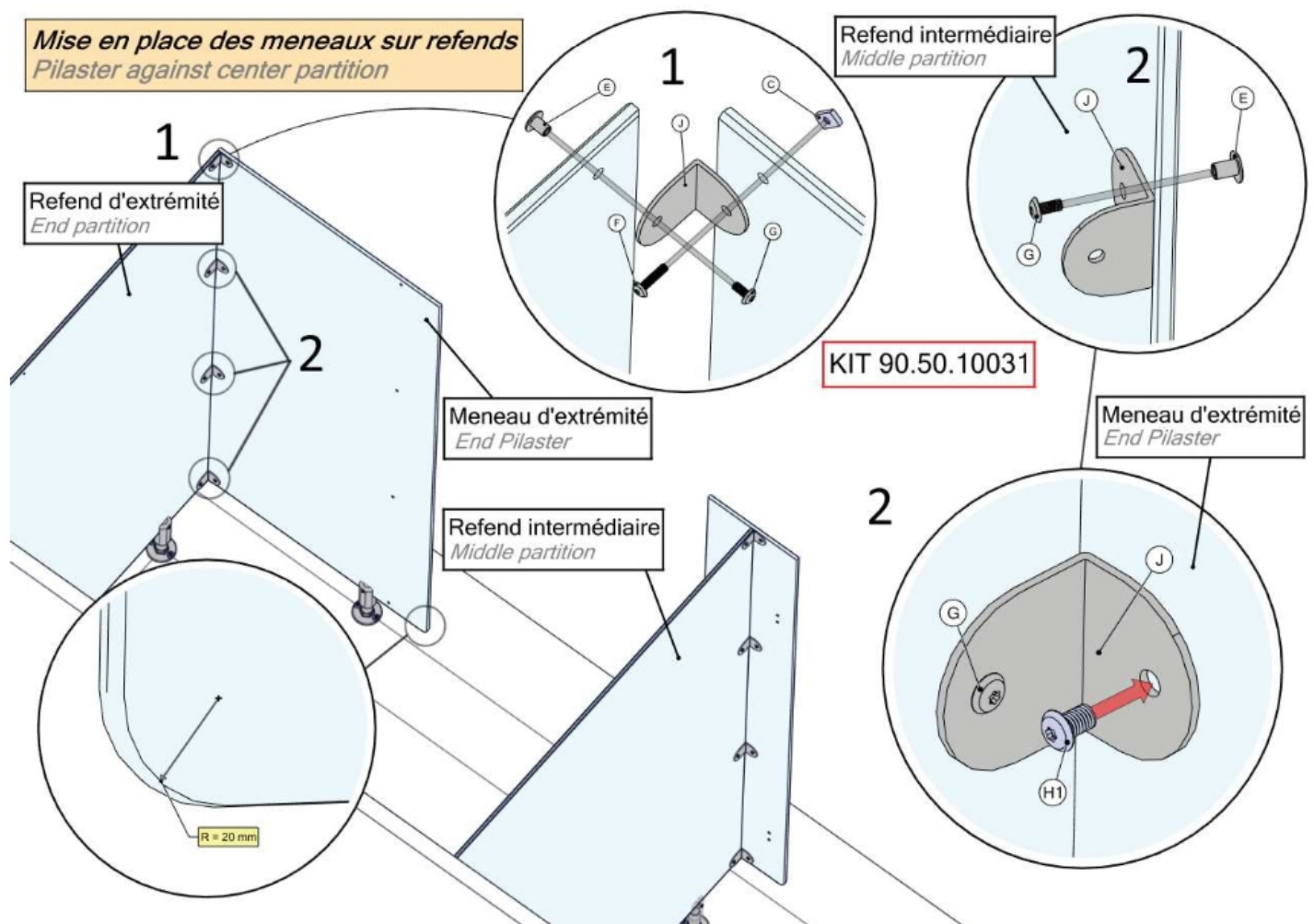
Still using fixings from KIT 90.50.10031, through-fix the 4 Pilaster Brackets 'J' to the **PARTITIONS** using the pre-drilled holes and fixings 'G' and 'E'. Refer to the Job Specific drawings to select the correct pilasters, panel numbers can be found on the drawings and on the printed label on each panel.

Once you have selected the correct panel, line up the pre-drilled holes with the exposed Pilaster Bracket 'J' hole. For the top pre-drilled hole, insert 1 'F' Fixing secured with 1 'C' nut. **PLEASE ENSURE THAT THE CHAMFERED EDGE IS IN THE TOP RIGHT CORNER AS YOU LOOK FROM THE FRONT OF THE CUBICLES.**

For the lower 3 pre-drilled holes use the 'H1' concealed fixing. **DO NOT THROUGH FIX**

Please refer to the drawings below for details.

As noted above only through-fix the Partitions. The Pilasters fixings should remain concealed!

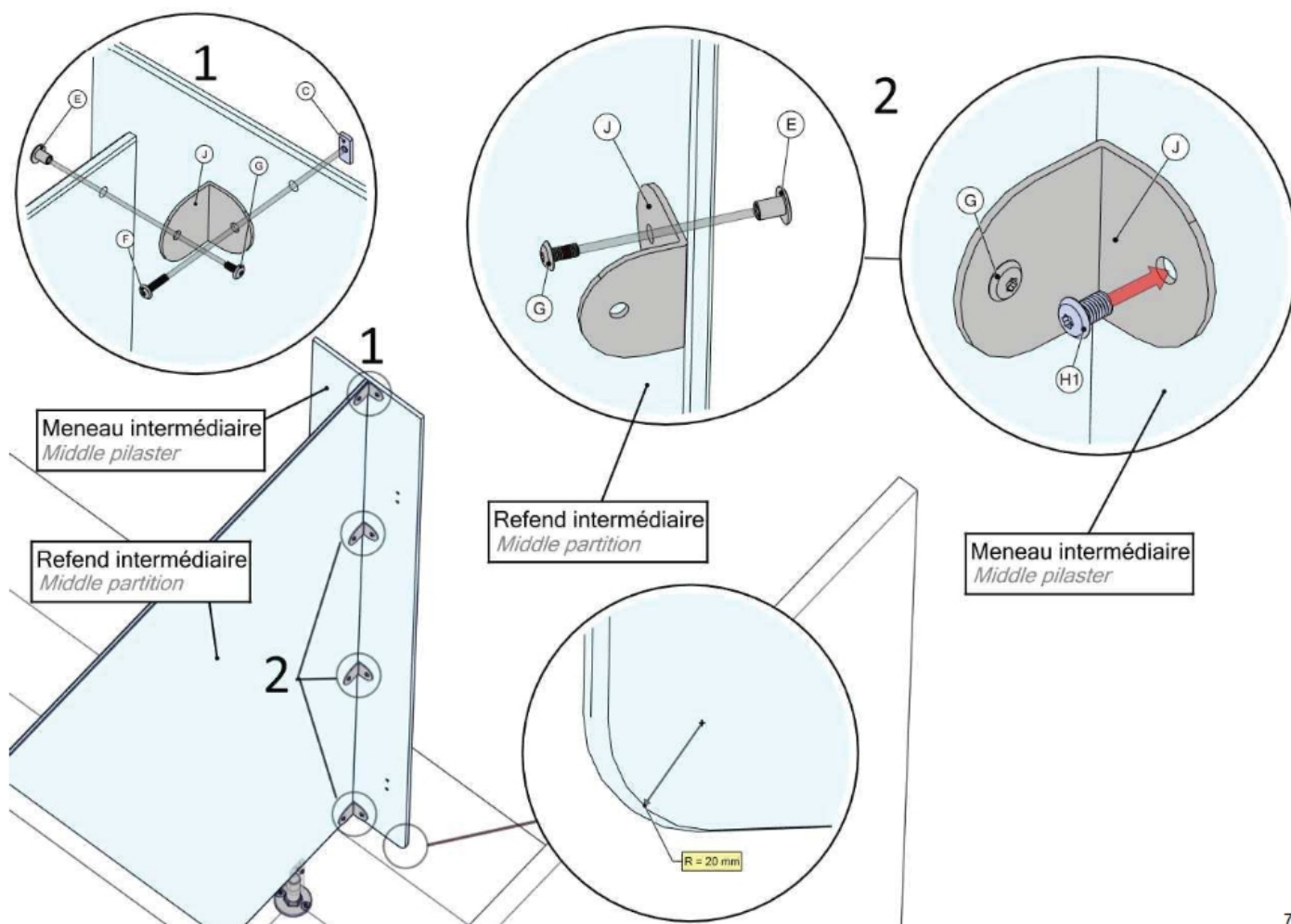


T: 01709 388 338

E: Sales@CubiclesDirect.co.uk

W: www.CubiclesDirect.co.uk

P: 8

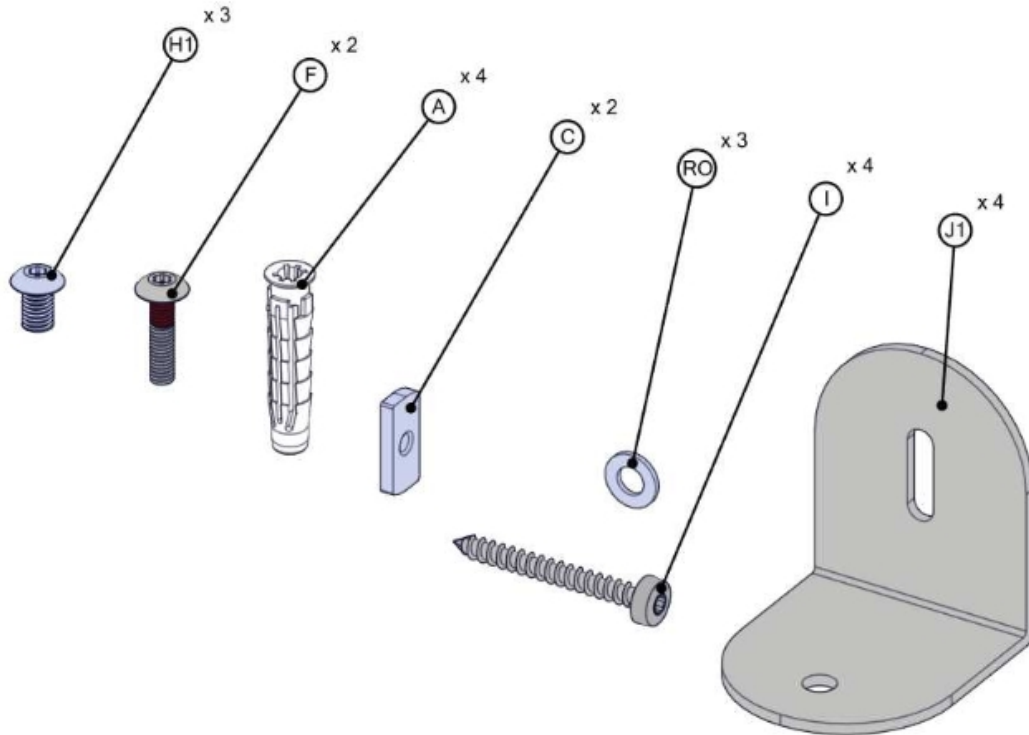


Cubicle Pilaster to Wall Installation

Please open KIT 90.50.10030. Included within this KIT you will find 4 Side Wall Brackets and fixings as shown below.

Mise en place des meneaux départ mur
Start/End pilaster against a wall

KIT 90.50.10030



Using the pre-marked Pilaster to Wall position and Fixings 'A' and 'I', fix all the Side Wall Brackets 'J1' to the wall. Please note that the top and bottom bracket must be in line with the Pilaster panel.

Pilaster panel holes have not been pre-drilled to allow adjustment on site.

Similar to the pilasters above, once you have selected the correct panel, line up the panel with the exposed Pilaster Bracket 'J1' holes and pencil mark these position. For the top marking, drill through the panel. For the lower 3 markings, drill 6-8mm into the panel.

Now line up the pre-drilled hole, for the top bracket insert 1 'F' Fixing secured with 1 'C' nut. **PLEASE ENSURE THAT THE CHAMFERED EDGE IS IN THE TOP RIGHT CORNER AS YOU LOOK FROM THE FRONT OF THE CUBICLES.**

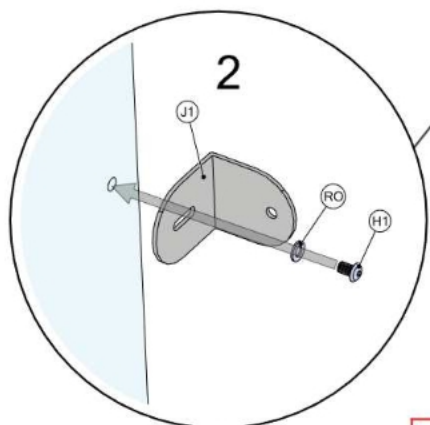
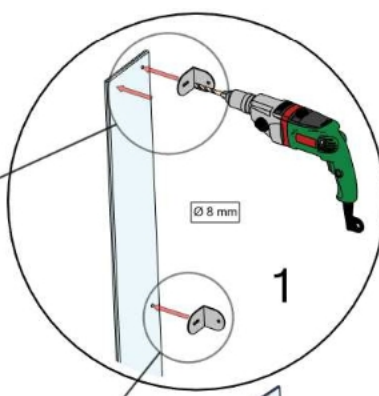
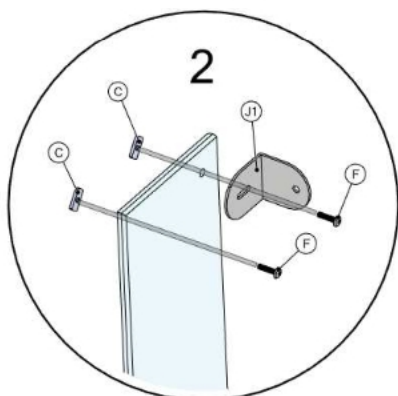
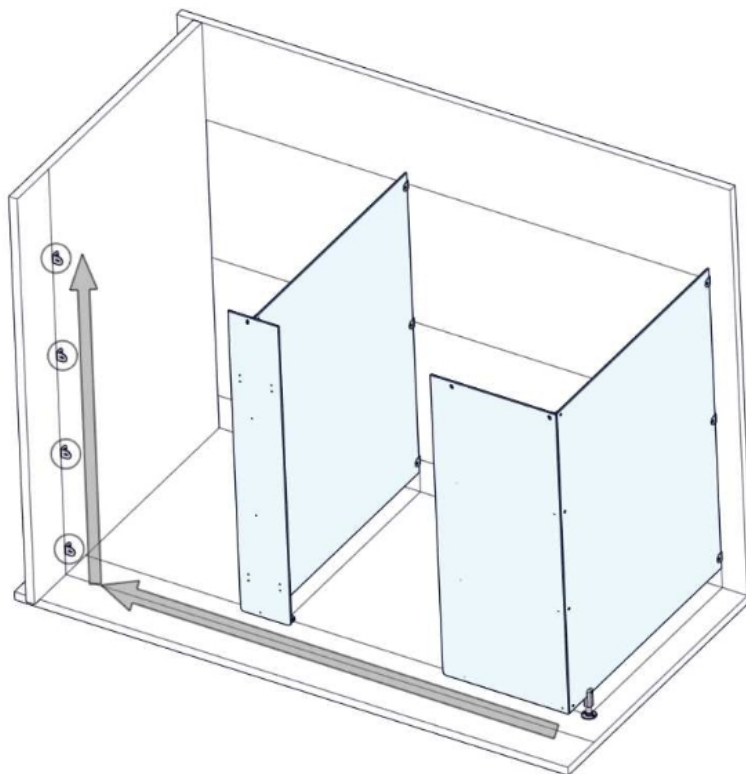
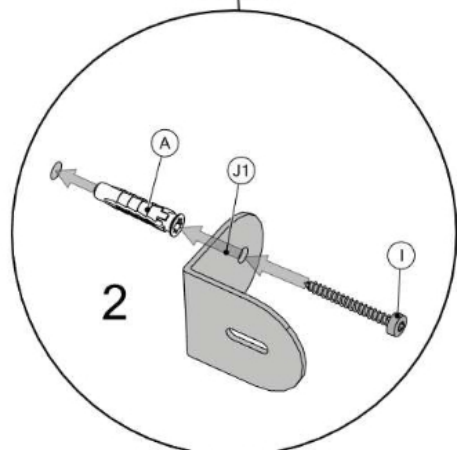
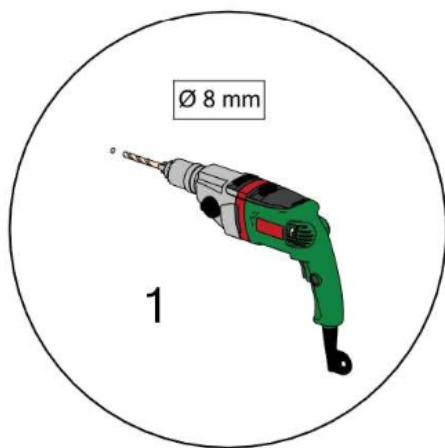
For the lower 3 pre-drilled holes use the 'H1' concealed fixing with the 'RO' Washer. **DO NOT THROUGH FIX**

T: 01709 388 338

E: Sales@CubiclesDirect.co.uk

W: www.CubiclesDirect.co.uk

P: 10



Ne pas serrer les écrous C
Do not tighten C nuts

T: 01709 388 338

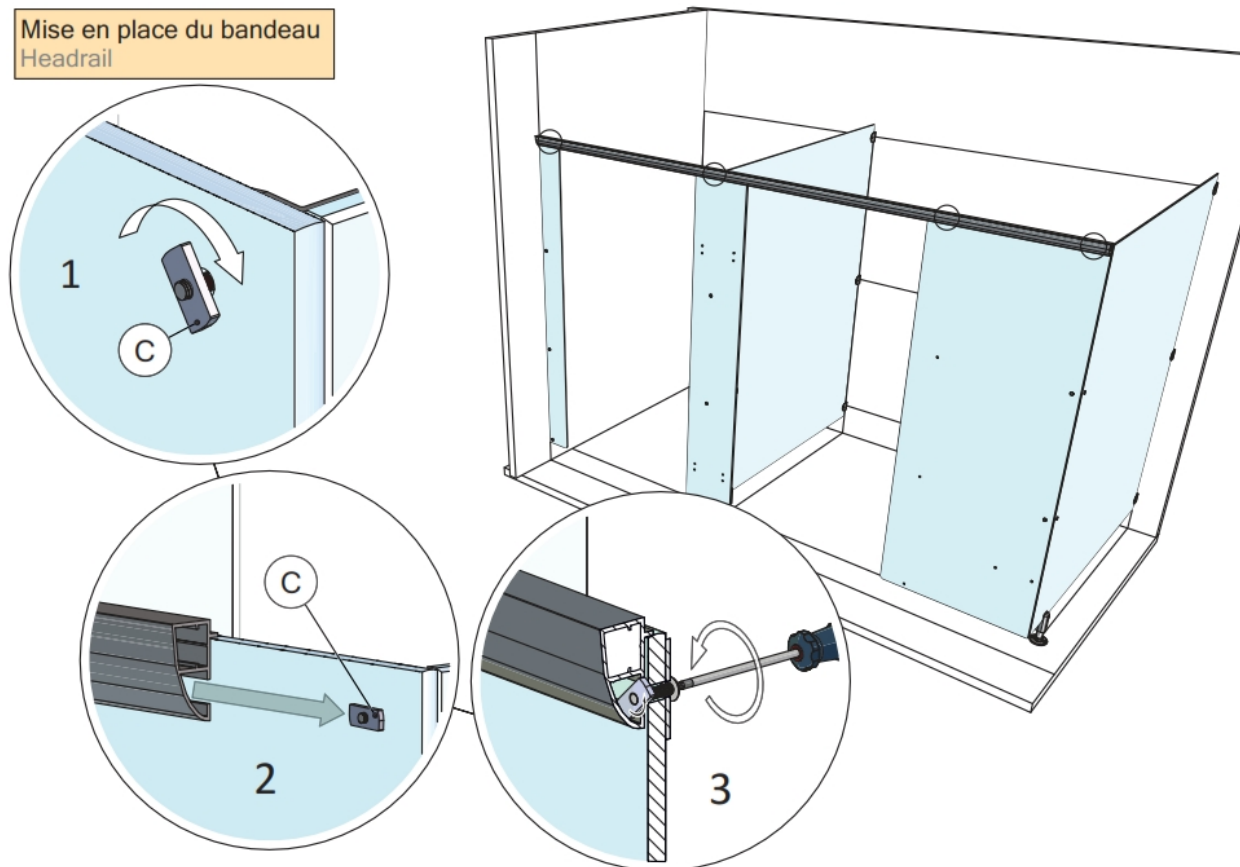
E: Sales@CubiclesDirect.co.uk

W: www.CubiclesDirect.co.uk

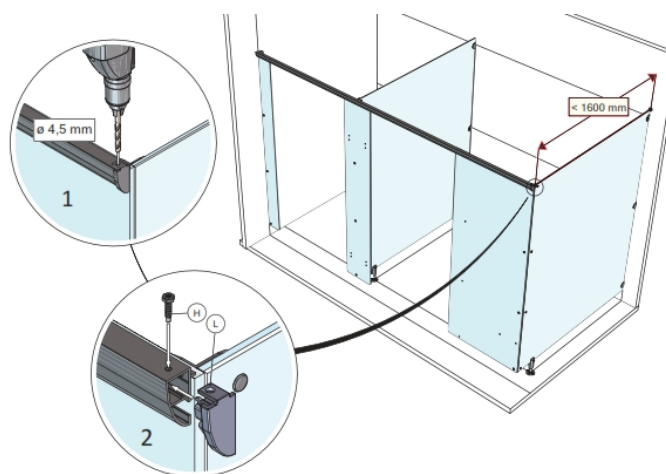
P: 11

Headrail Installation

Keep all 'C' nuts horizontal and partial tightened, ensuring that the chamfered edge is in the top right corner as you look from the front of the cubicles. Either slide or push the headrail over the 'C' nuts and tighten the Fixing 'F' as shown below. Ensure that the headrail is secured in all positions, if not, repeat the process above until it is.



If a Headrail End Cap is required, for example if the Cubicles have a Cubicle Return Wall, please follow these instructions.



T: 01709 388 338

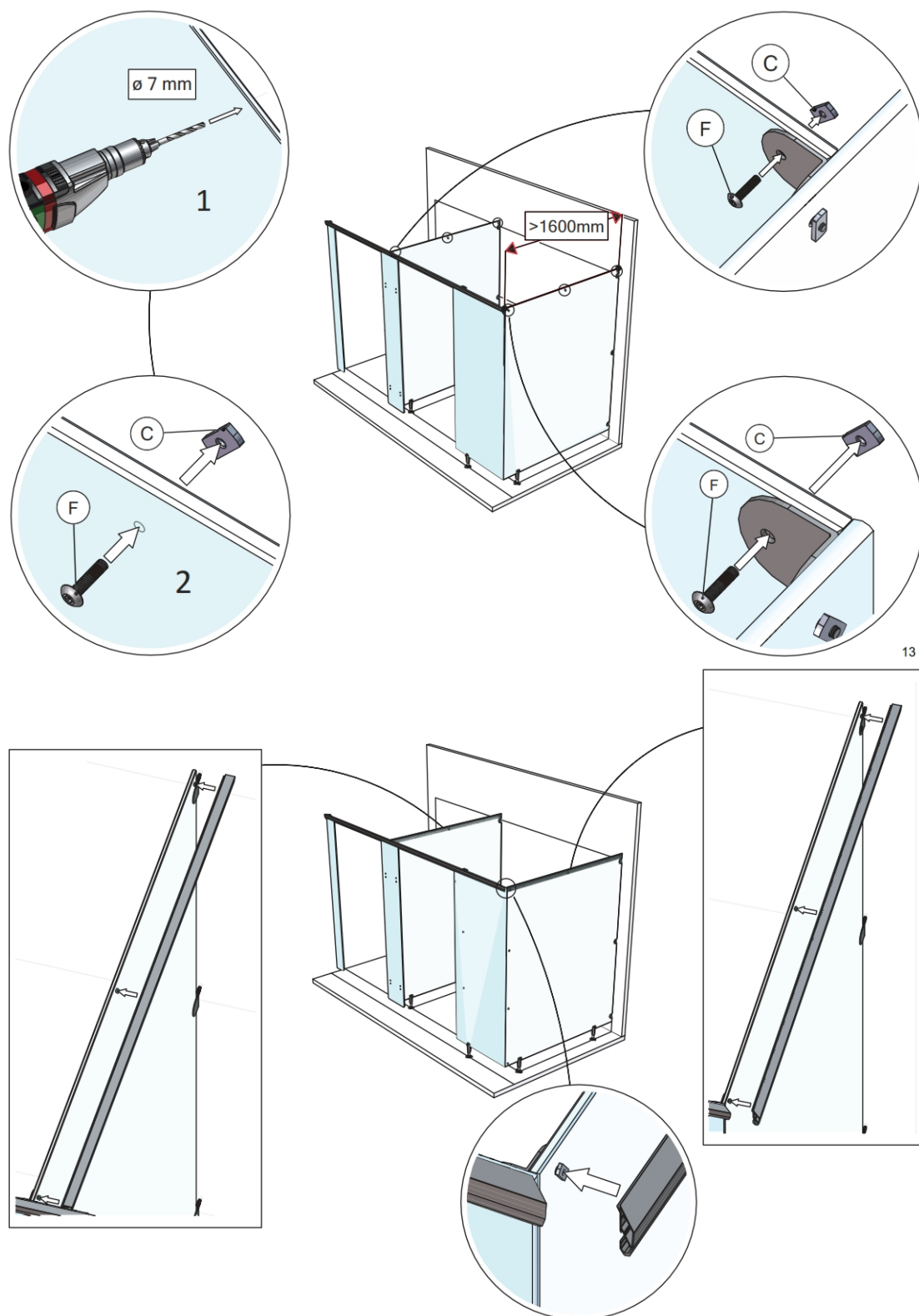
E: Sales@CubiclesDirect.co.uk

W: www.CubiclesDirect.co.uk

P: 12

If the Job Specific drawings show that a **STIFFENER POST AND FOOT** is required, please see **PAGE 20** of this Instruction Manual.

If the cubicles are over 1600mm deep, they will require a Headrail down the Partition panel, if this is the case, please follow these instructions.



T: 01709 388 338

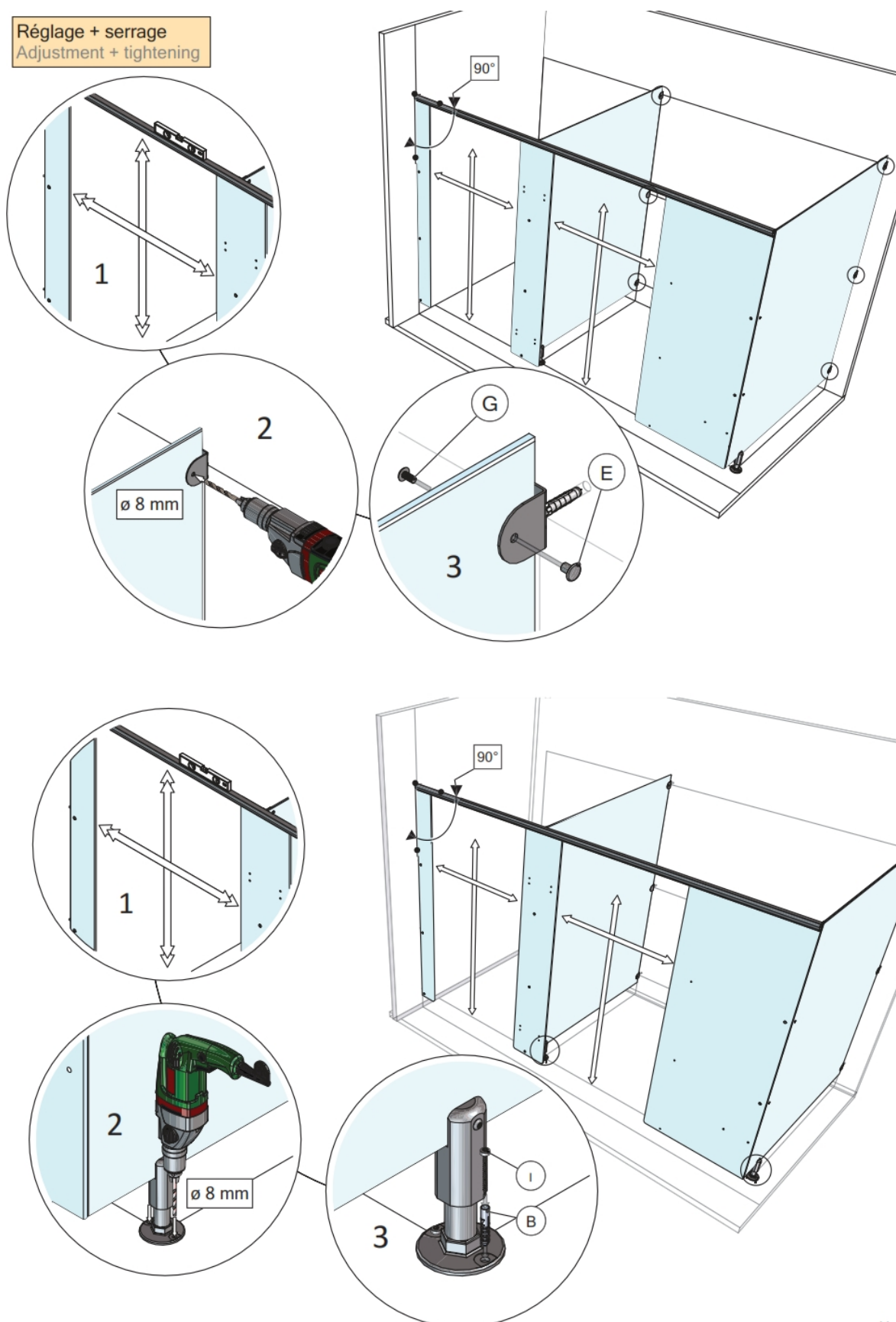
E: Sales@CubiclesDirect.co.uk

W: www.CubiclesDirect.co.uk

P: 13

Adjustments and Tightening

Réglage + serrage
Adjustment + tightening



11

T: 01709 388 338

E: Sales@CubiclesDirect.co.uk

W: www.CubiclesDirect.co.uk

P: 14

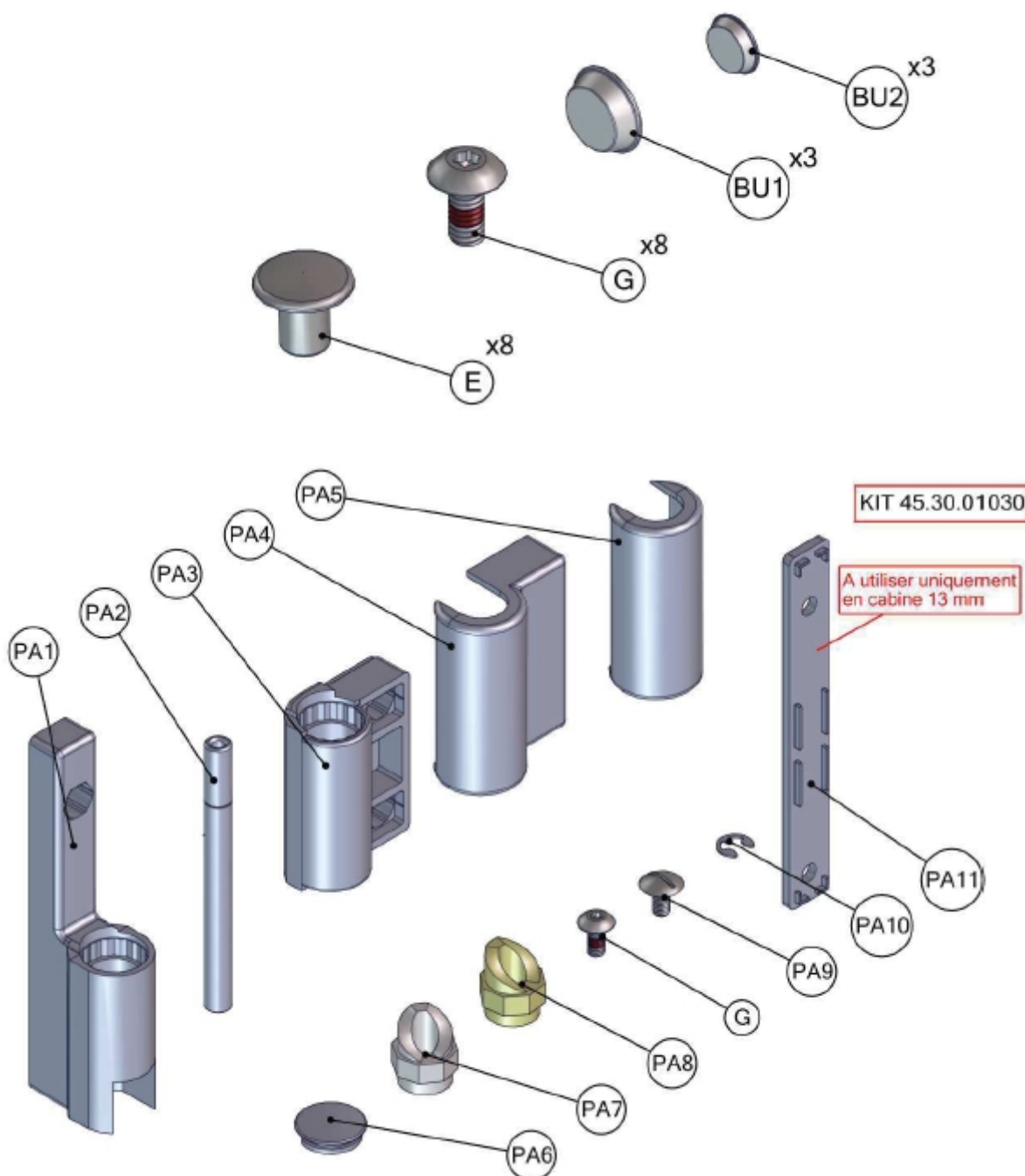
Hinge and Door Installation

For **PARTITION** mounted hinges, please open one KIT 90.50.00051 and two KIT 45.30.01030. For **PILASTER** mounted hinges, please open one KIT 90.50.00067 and two KIT 45.30.01030. Included within these KITS you will find 2 Hinge Packers and 2 Hinges and fixings.

Mise en place des portes
Doors

KIT 90.50.00059
(Fixation)

Erratum de la page 16 de la Notice Cabine Granit

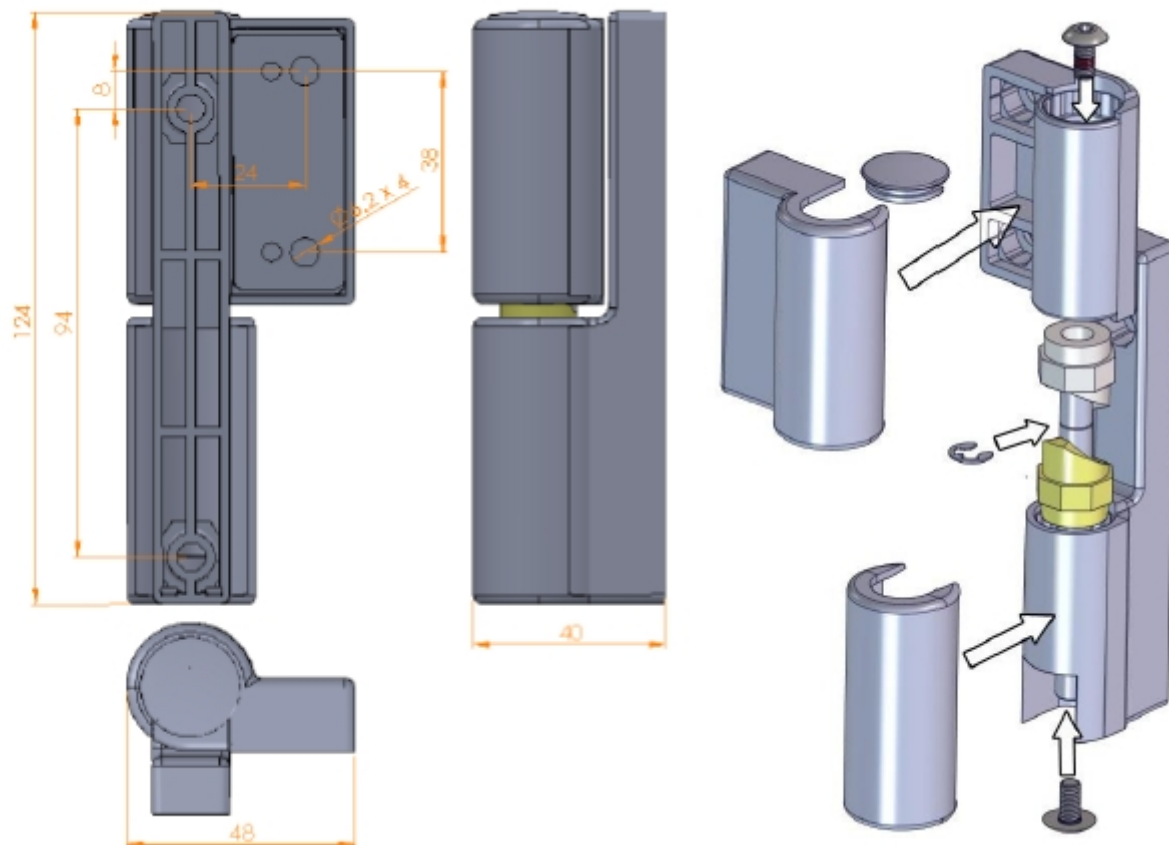


T: 01709 388 338

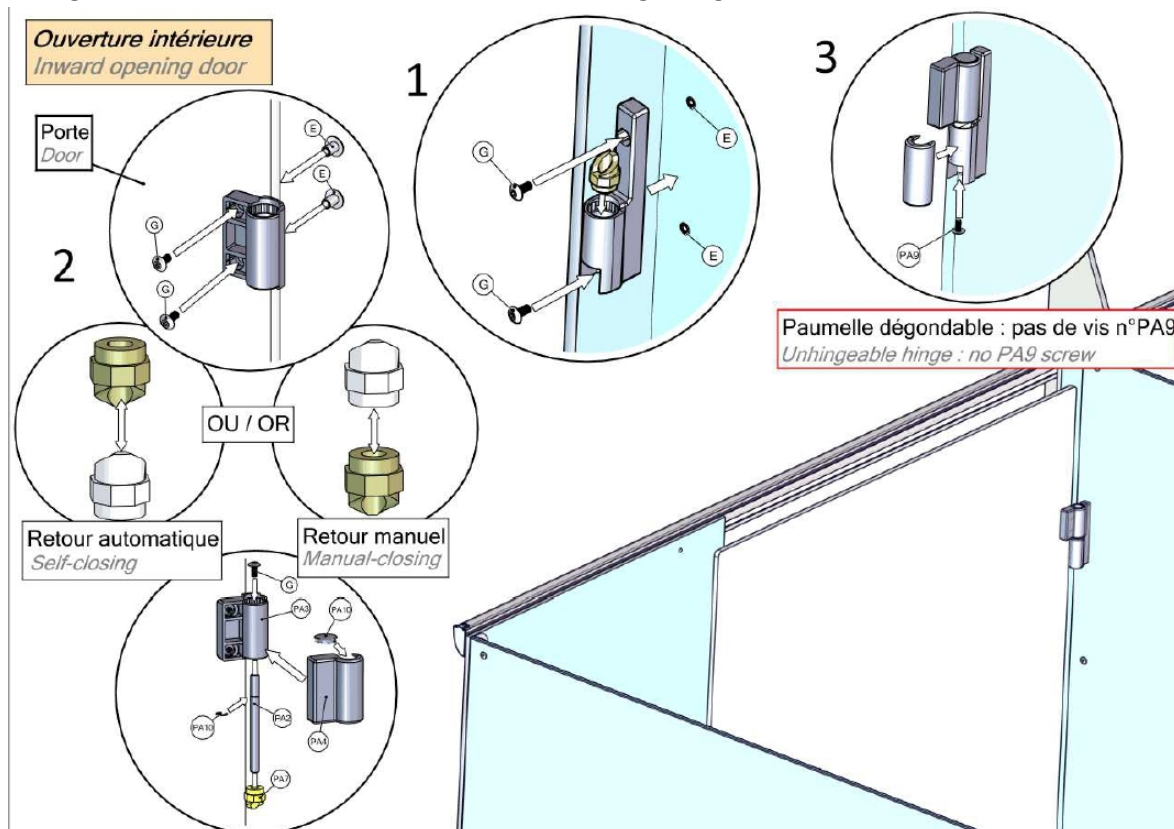
E: Sales@CubiclesDirect.co.uk

W: www.CubiclesDirect.co.uk

P: 15



For doors shown on the Job Specific drawings as **PARTITION** mounted, fix the Hinge Packers 'PA11' and the lower half of the Hinge 'PA1' to the **PARTITION** as shown below using Fixing 'E' and 'G'.



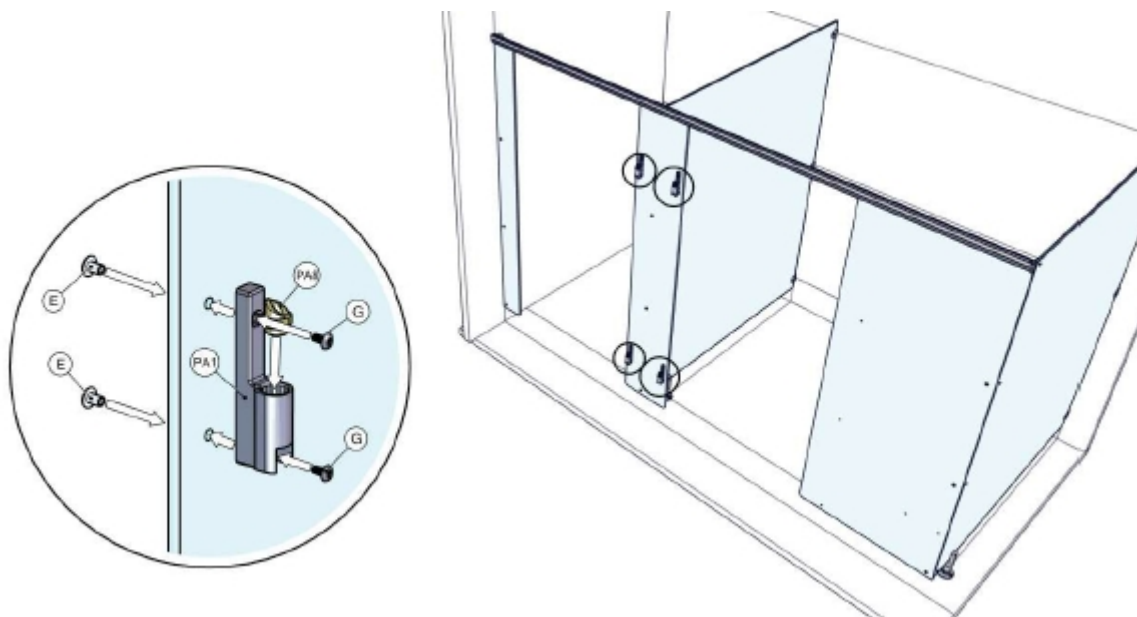
T: 01709 388 338

E: Sales@CubiclesDirect.co.uk

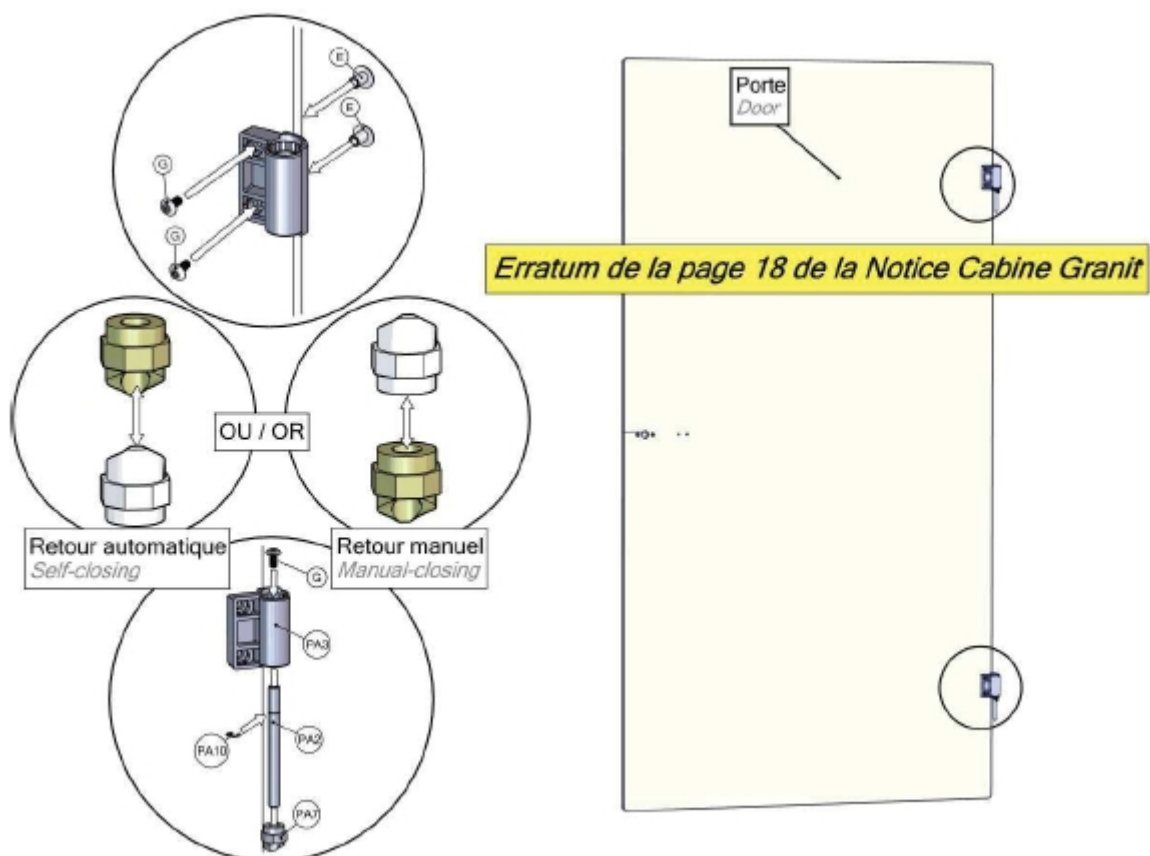
W: www.CubiclesDirect.co.uk

P: 16

For doors shown on the Job Specific drawings as **PILASTER** mounted, fix the Hinge Packers KIT 90.50.00067 and the lower half of the Hinge 'PA1' to the **PILASTER** as shown below using Fixing 'E' and 'G'.



From there, assemble the remaining components, keeping the upper half of the hinge and its fixings aside for the moment. **HINGES CAN EITHER BE SET TO SELF-CLOSING OR MANUAL-CLOSING AS SHOWN BELOW.**



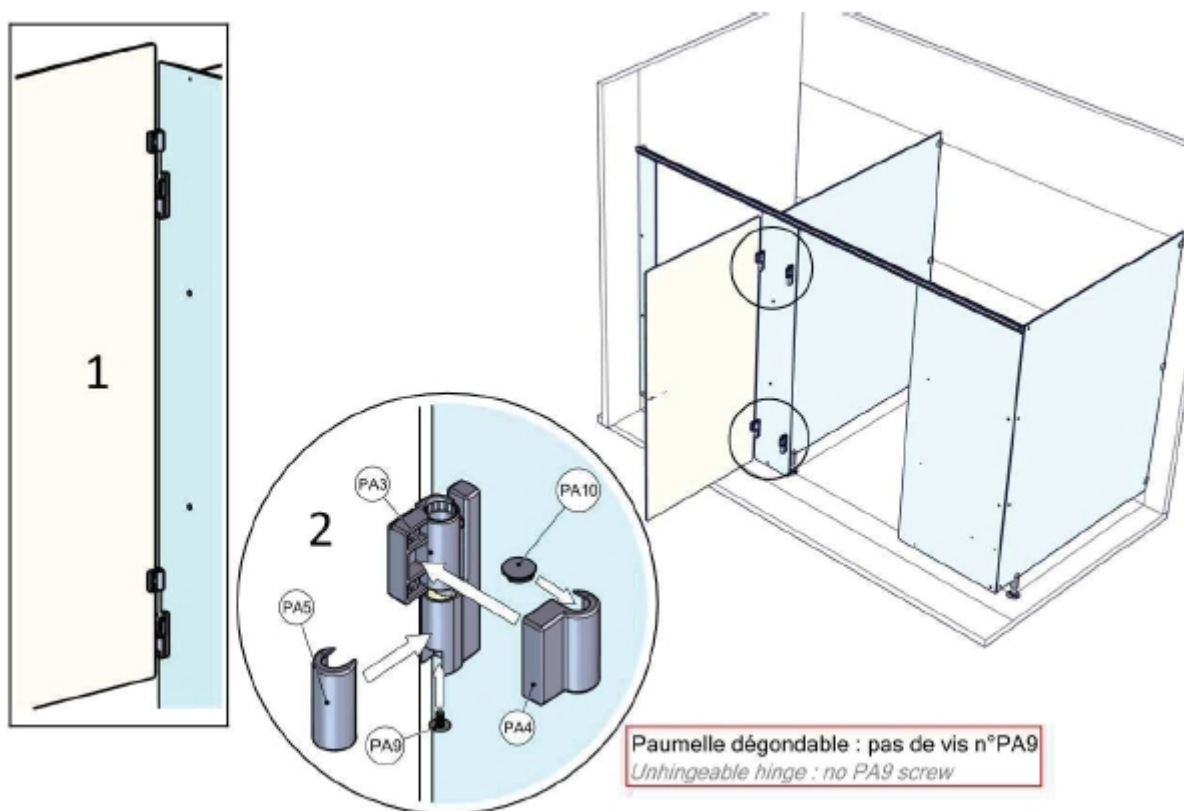
T: 01709 388 338

E: Sales@CubiclesDirect.co.uk

W: www.CubiclesDirect.co.uk

P: 17

Now fix the upper half of the Hinge 'PA3' to the door using Fixings 'E' and 'G' as shown below



You can now place the door Hinge 'PA3' onto the Pilaster/Partition Hinge 'PA1' as shown below. Screw in Fixing 'G' and 'PA9' and tighten both until the hinge is securely locked together. Once this has been completed finish the Hinge by covering both the upper and lower halves with the Hinge Cover Plate 'PA4' and 'PA5'.

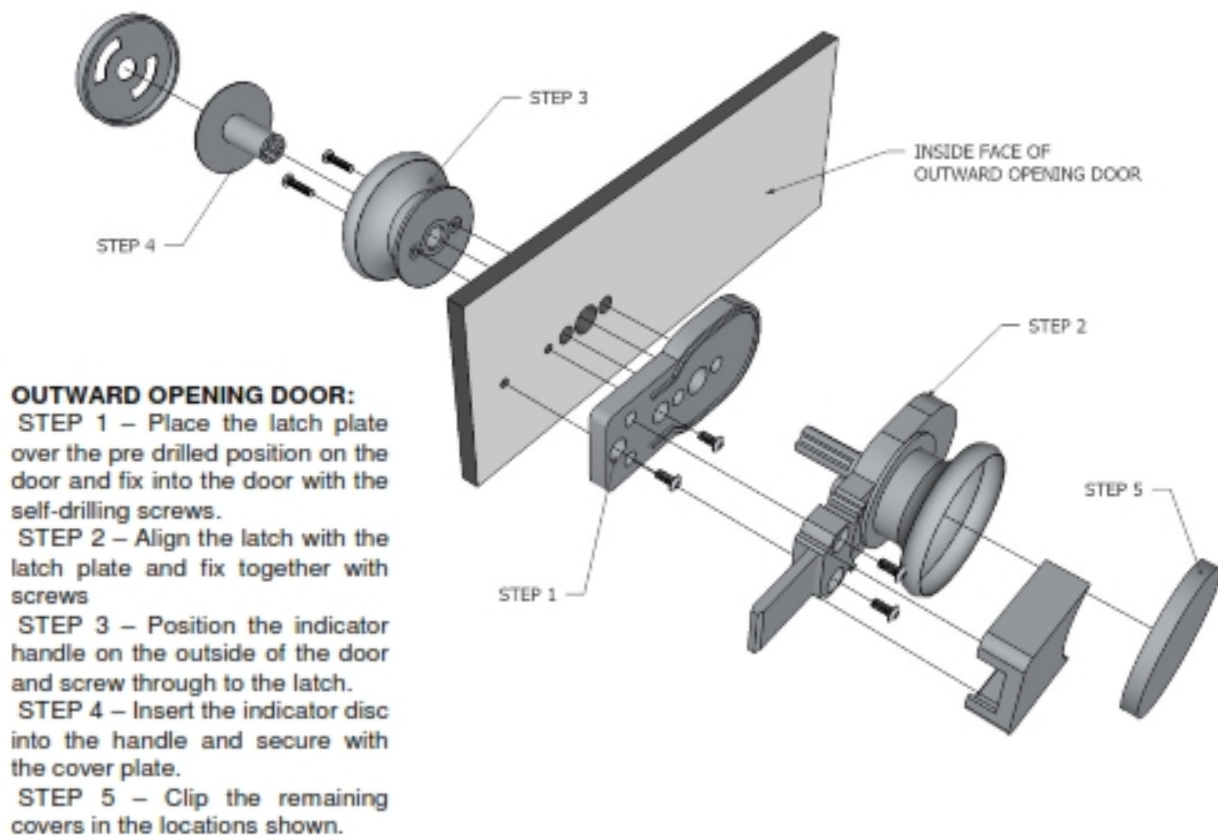
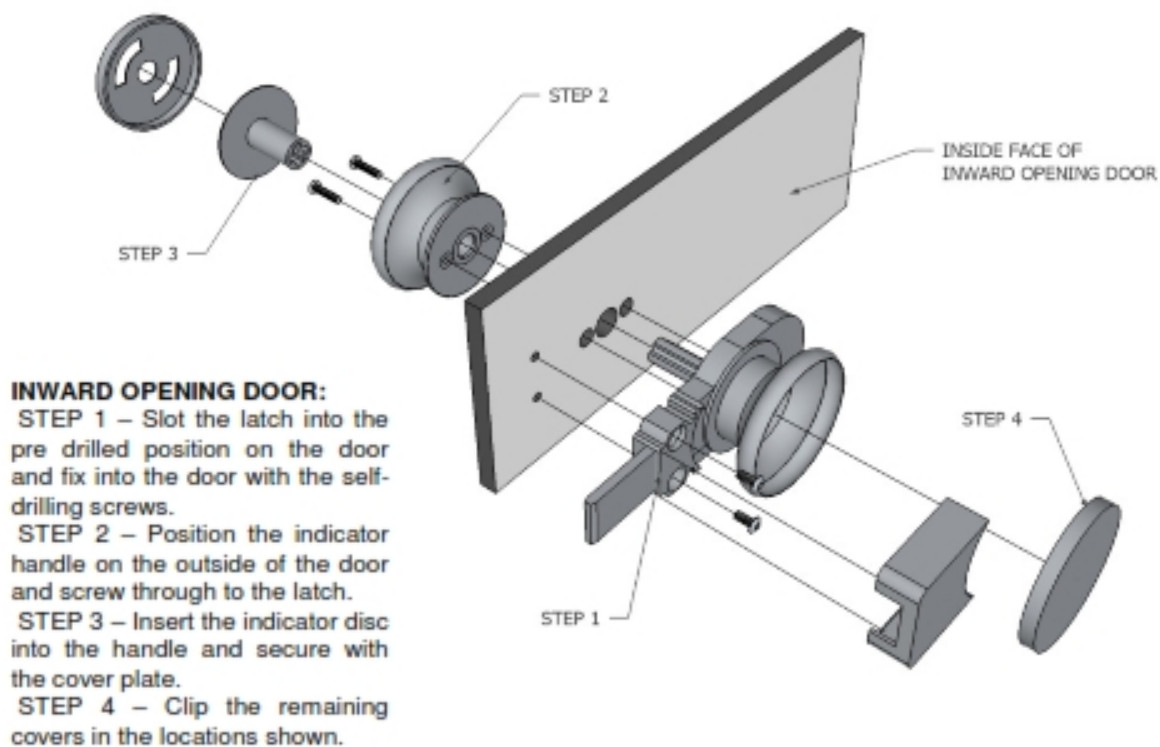
T: 01709 388 338

E: Sales@CubiclesDirect.co.uk

W: www.CubiclesDirect.co.uk

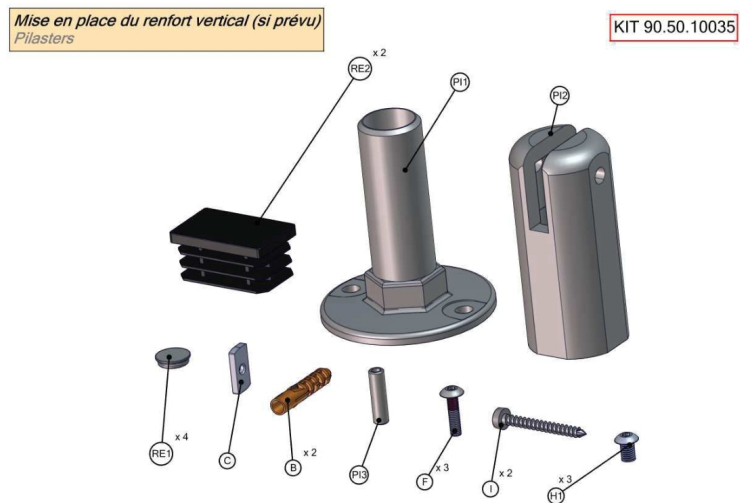
P: 18

Lock Installation

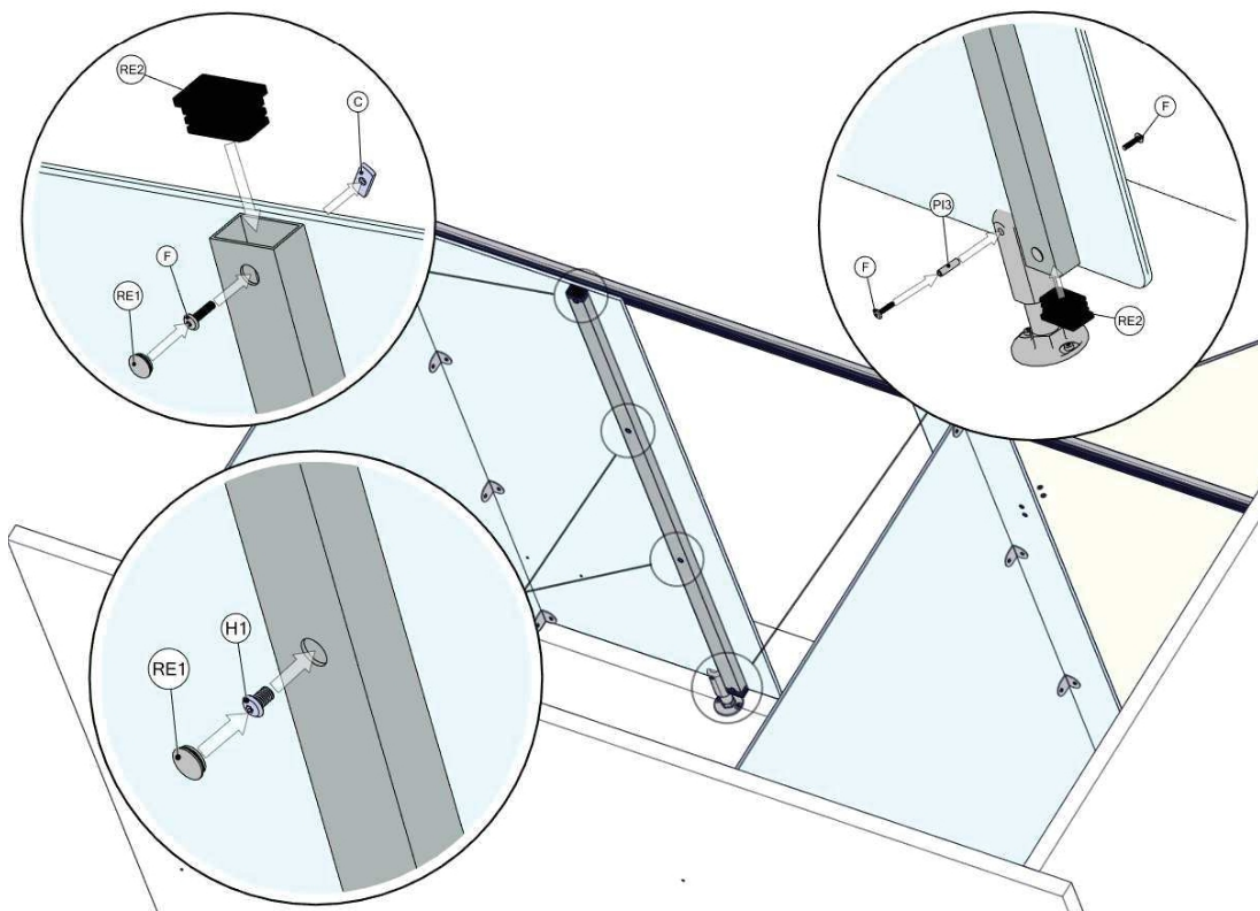


Stiffener Post and Foot

On **PILASTERS** over a certain size, an addition Stiffener Post and Foot is required. These are detailed and noted on the Job Specific drawings. If these are required on your project, please open KIT 90.50.10035 and KIT 50.15.01850. This will include a foot, 2 end caps 1 stiffener post and fixings.



The **PILASTERS** have pre-drilled holes, line up the Stiffener Post with these holes and insert the 'F' Fixing into the top hole and the 'H1' Fixings into the lower 3 holes. Use the 'RE1' and 'RE2' Caps to finish as shown below



T: 01709 388 338

E: Sales@CubiclesDirect.co.uk

W: www.CubiclesDirect.co.uk

P: 20