

WARNING!!!!

**DO NOT DRAG LAMINATE OFF THE
PALLET AS THIS WILL CAUSE
DAMAGE/SCRATCHES TO THE
PANELS UNDERNEATH.**

**PLEASE LIFT ALL PANELS FROM
THE 4 CORNERS.**

T: 01709 388 338

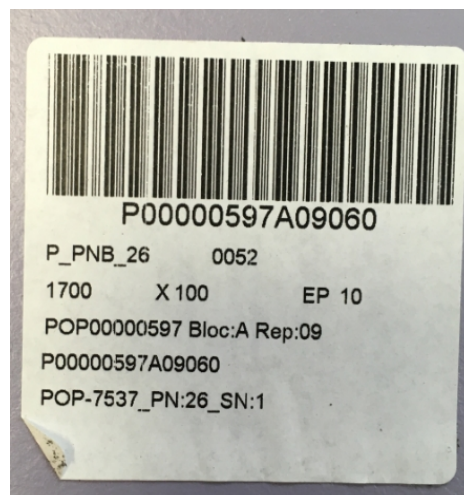
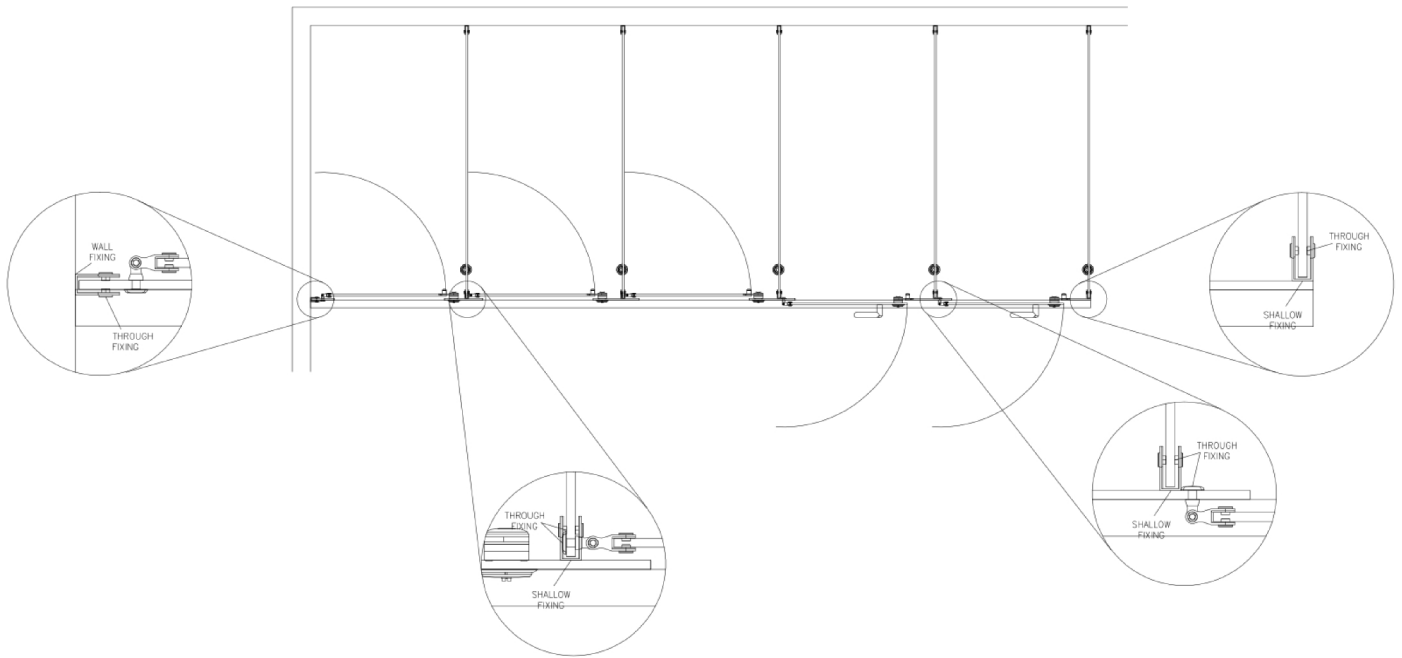
E: Sales@CubiclesDirect.co.uk

W: www.CubiclesDirect.co.uk

P: 1



Cabine Plus+ Cubicle System – Installation Instructions



PN: = PANEL NUMBER

Refer to Project Drawings. This sticker will be on all 10mm Panels for you Project

T: 01709 388 338

E: Sales@CubiclesDirect.co.uk

W: www.CubiclesDirect.co.uk

P: 2



Important Information

- An inventory of all items delivered/collected must be conducted within the 1st **48 HOURS** of receiving the goods. All damaged or missing parts **MUST BE REPORTED WITHIN THIS TIME**. Any request for missing parts after this date will require an additional purchase order.
- We would strongly recommend **NOT** opening all KITS simultaneously, please open them as requested through the installation instructions.

Preliminary Recommendation

- Screws and wall plugs are made for concrete walls and floors. In case of other materials, the customer must provide suitable fixings.
- Panels will have to be adjusted and drilled on site.
- Headrails have to be adjusted on site.
- To avoid panels warping, panels must be stored:-
 - Horizontally without a cantilever bracket support.
 - Indoors in a dry place.
 - Between temperatures of 5° and 30°.
 - Installation must be done as soon as possible.

Table of Contents

• General Cubicle Arrangement	2
• Important Information	3
• Toolbox	4
• Installation Site Set Out	5
• Cubicle Partition to Wall Installation	6
• Cubicle Support Leg Installation	7
• Cubicle Pilaster to Partition Installation	8
• Cubicle Pilaster to Wall Installation	9
• Headrail Installation	10
• Adjustment and Tightening	12
• Hinge and Door Installation	13
• Lock Installation	14
• Stiffener Post and Foot	15

T: 01709 388 338

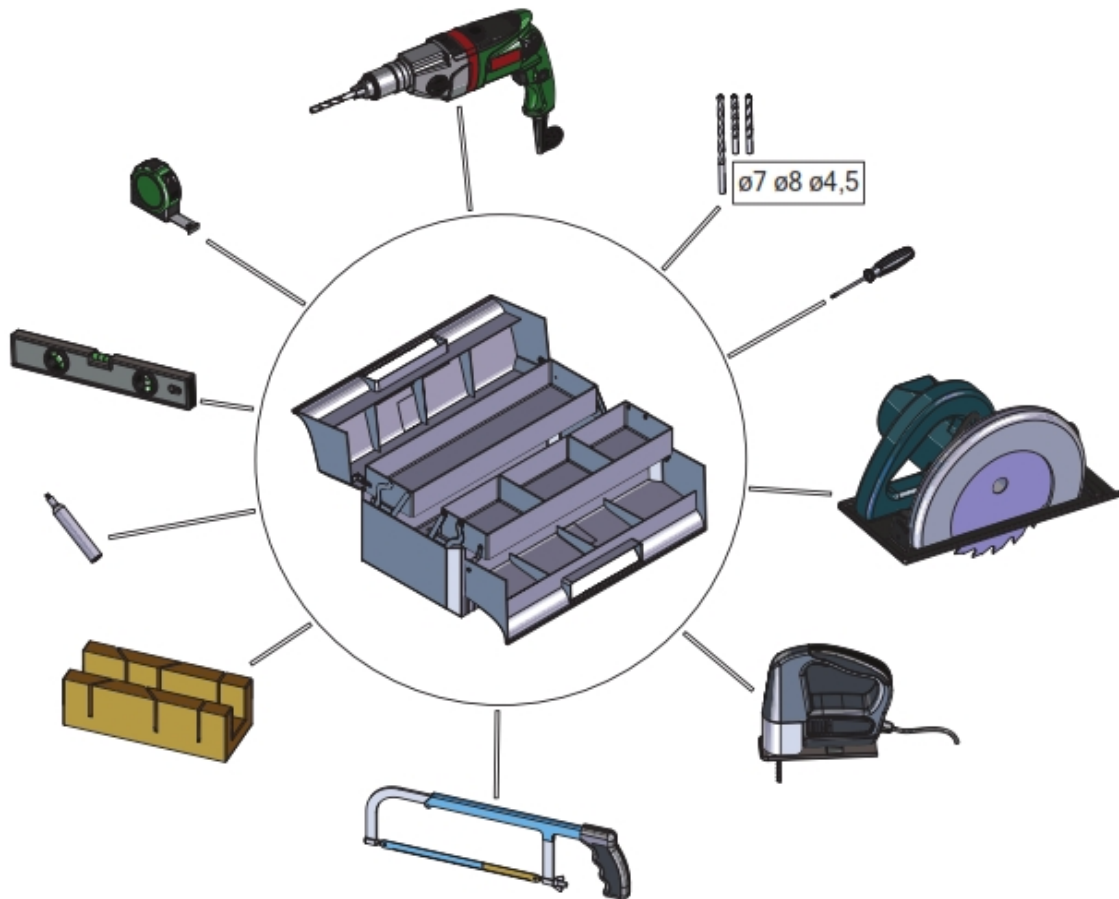
E: Sales@CubiclesDirect.co.uk

W: www.CubiclesDirect.co.uk

P: 3



Equipment Required for Installation



Automatic Drill	Drill bits at $\phi 4$, $\phi 5$, $\phi 7$ & $\phi 8$	Flat Head Screw Driver
Electrical Saw	Torx Screwdriver	Saw
Setting Block	Pencil	Spirit Level
Tape Measure	Alan Key	

T: 01709 388 338

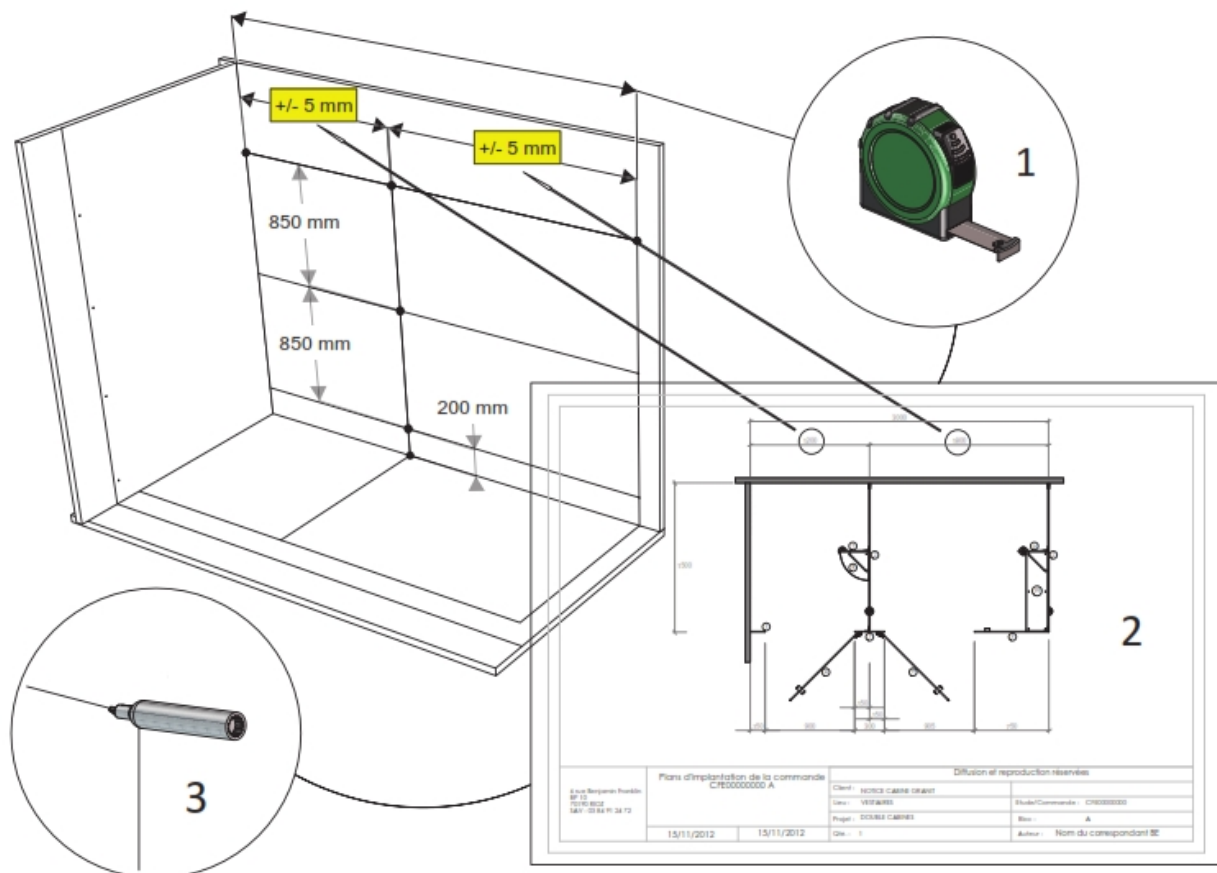
E: Sales@CubiclesDirect.co.uk

W: www.CubiclesDirect.co.uk

P: 4

Installation Site Set Out

Use the job specific drawings provided to you to mark out the layout of the cubicles. If site dimensions provided to Cubicles Direct are different to those present on site, you will either have to make adjustments to the panels or order new panels.



As shown above, we would recommend that you mark out the following:-

- Cubicle Centre Positions
- Cubicle Front Wall Position
- Height of Floor Clearance Required – Must be between 100mm and 150mm FFL
- Partition Foot Position – Set 160mm back from the cubicle front wall line
- Pilaster to Wall Position

T: 01709 388 338

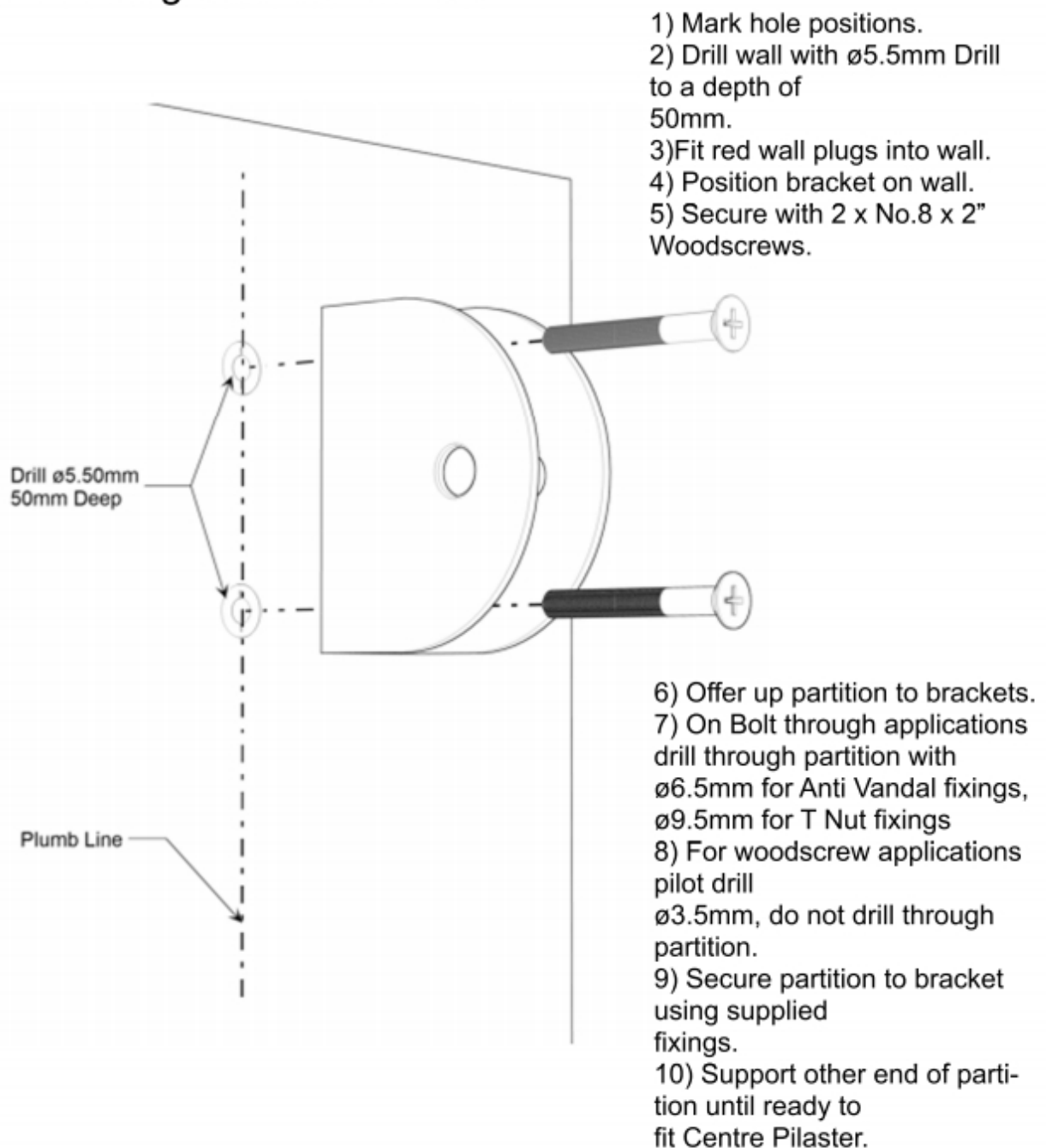
E: Sales@CubiclesDirect.co.uk

W: www.CubiclesDirect.co.uk

P: 5

Product Information Sheet

Guide To Fitting Brackets To Wall



Product Information Sheet

Support Leg

PS2/11

- Mark all holes / centre line positions as accurately as possible.
 - Take care not to damage hardware or chip powder coatings.
1. Mark off the vertical centre line of the support onto the front edge of the partition, ideally this should be within 250mm from the front edge
 2. Loosen the retaining screw in the Leg Shroud and lift up the Shroud to access the adjuster mechanism adjust the block up into the support as far as it will allow.
 3. Offer up the support to the partition and mark out the hole position on the centre line.
 4. Drill through using a $\varnothing 9.5\text{mm}$ drill.
 5. Fix support to partition using the M6 T Nuts and M6 Althread.
 6. The partition can now be mounted to the wall, ensure that the front edge is supported by the use of packing pieces.
 7. Once the partition is secure, the support block can be adjusted to floor level taking full support of the partition.
 8. Using a $\varnothing 5.50\text{mm}$ masonry drill, drill through the block following the angle to a depth of 50mm
 9. Fit red wall plugs and secure the foot to the floor using the No.8 x 2" Woodscrews.
 10. The shroud can now be lowered to the floor and secured using the retaining screw.



Cubicle Pilaster to Partition Installation

T: 01709 388 338

E: Sales@CubiclesDirect.co.uk

W: www.CubiclesDirect.co.uk

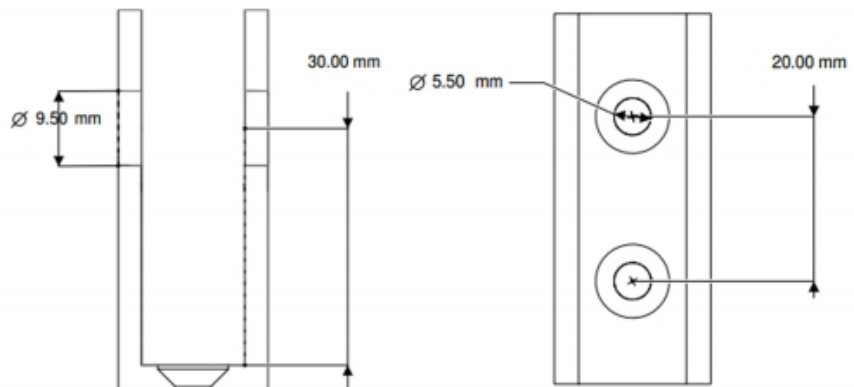
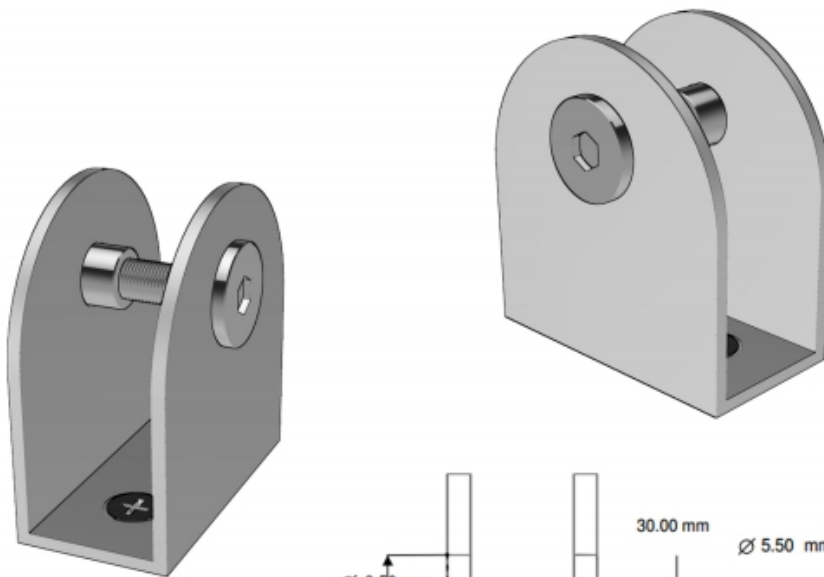
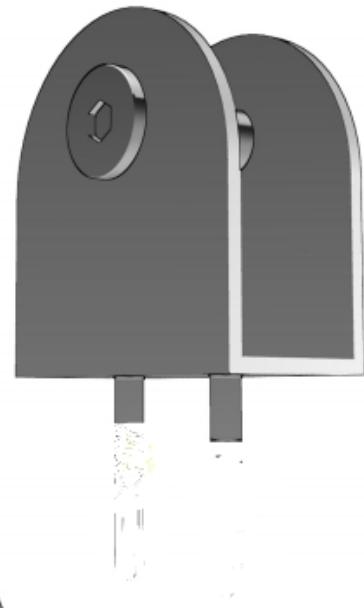
P: 7

Product Information Sheet

Brackets

WM 3/7

- To fix brackets to the wall refer to Information sheet 'Guide to fitting Brackets to Wall'
- Offer up partition to bracket.
- Drill through using $\varnothing 9.5\text{mm}$ drill.
- Secure partition to brackets using fixings provided.



T: 01709 388 338

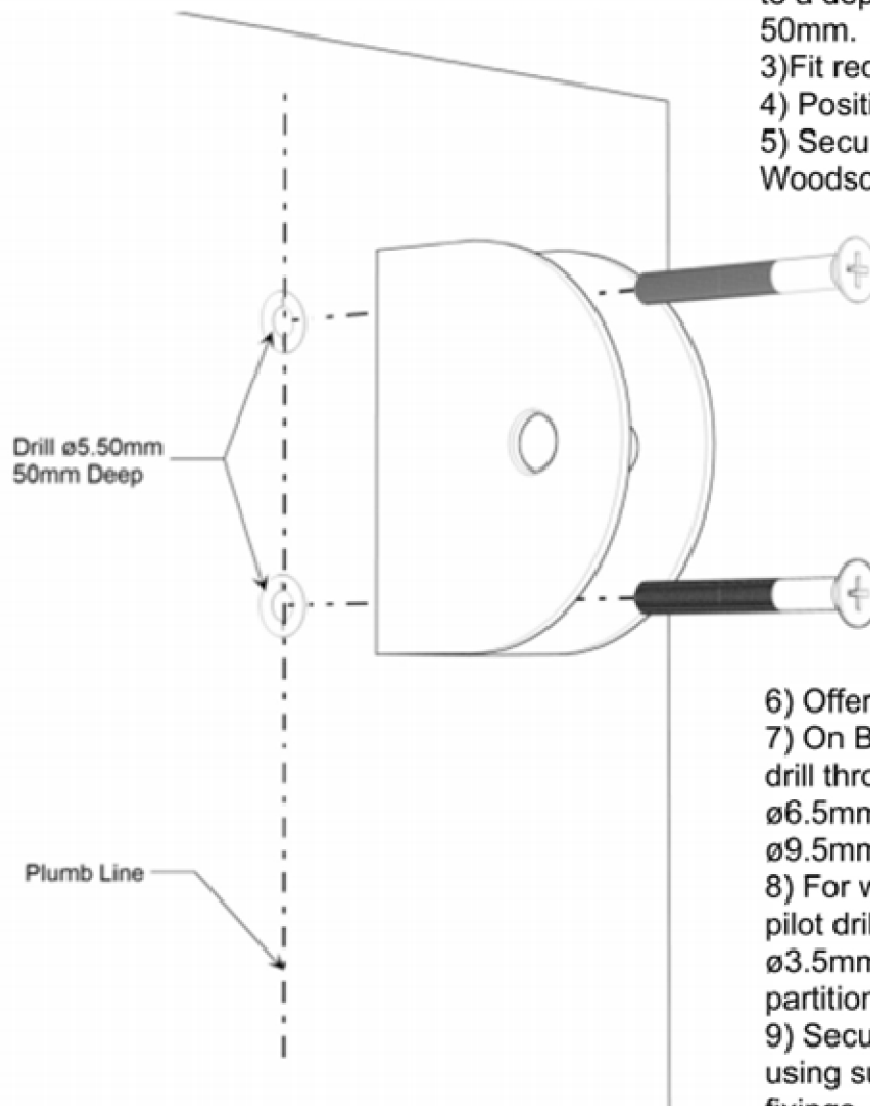
E: Sales@CubiclesDirect.co.uk

W: www.CubiclesDirect.co.uk

P: 8

Product Information Sheet

Guide To Fitting Brackets To Wall

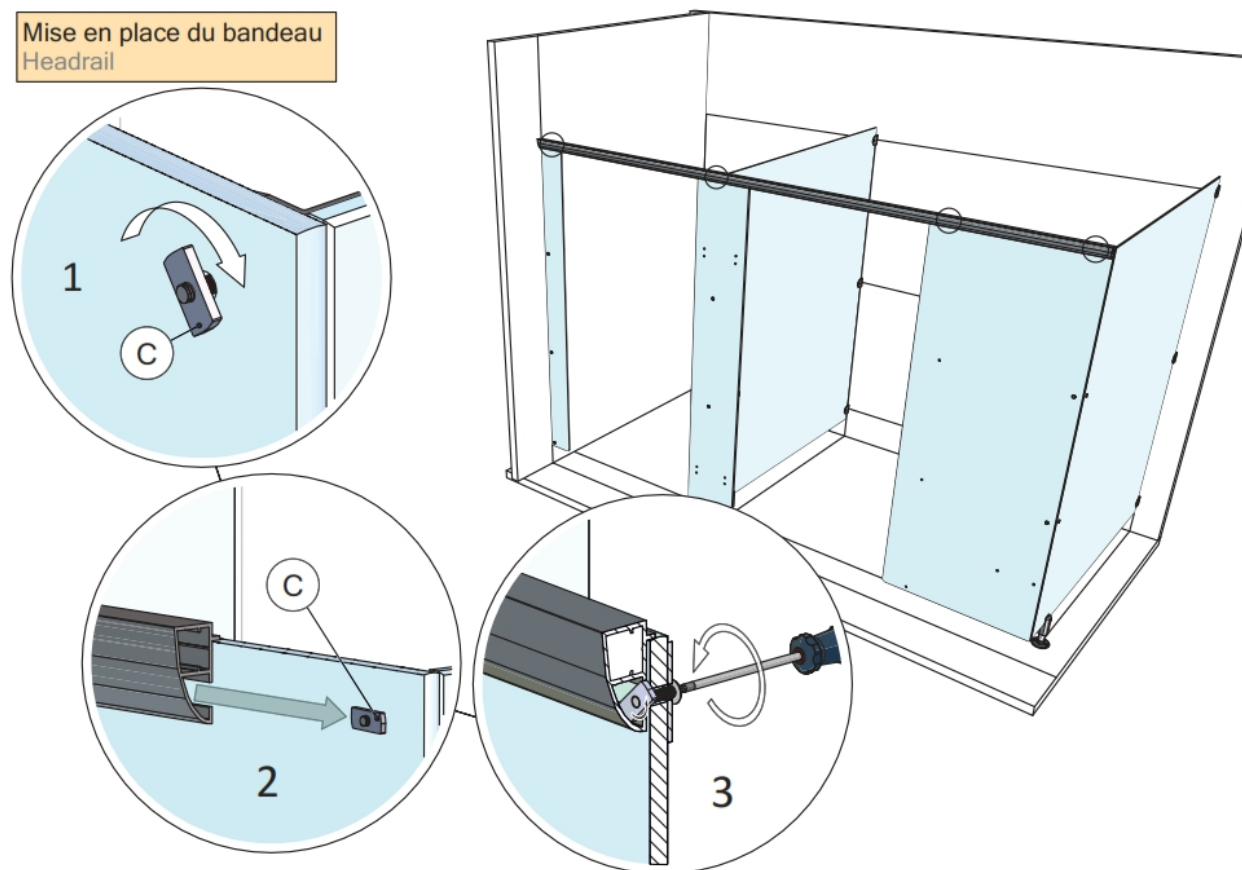


- 1) Mark hole positions.
- 2) Drill wall with ø5.5mm Drill to a depth of 50mm.
- 3) Fit red wall plugs into wall.
- 4) Position bracket on wall.
- 5) Secure with 2 x No.8 x 2" Woodscrews.

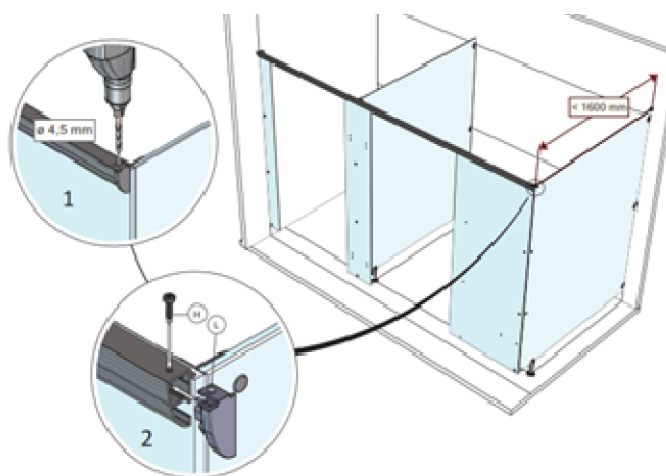
- 6) Offer up partition to brackets.
- 7) On Bolt through applications drill through partition with ø6.5mm for Anti Vandal fixings, ø9.5mm for T Nut fixings
- 8) For woodscrew applications pilot drill ø3.5mm, do not drill through partition.
- 9) Secure partition to bracket using supplied fixings.
- 10) Support other end of partition until ready to fit Centre Pilaster.

Headrail Installation

Keep all 'C' nuts horizontal and partial tightened, ensuring that the chamfered edge is in the top right corner as you look from the front of the cubicles. Either slide or push the headrail over the 'C' nuts and tighten the Fixing 'F' as shown below. Ensure that the headrail is secured in all positions, if not, repeat the process above until it is.



If a Headrail End Cap is required, for example if the Cubicles have a Cubicle Return Wall, please follow these instructions.



T: 01709 388 338

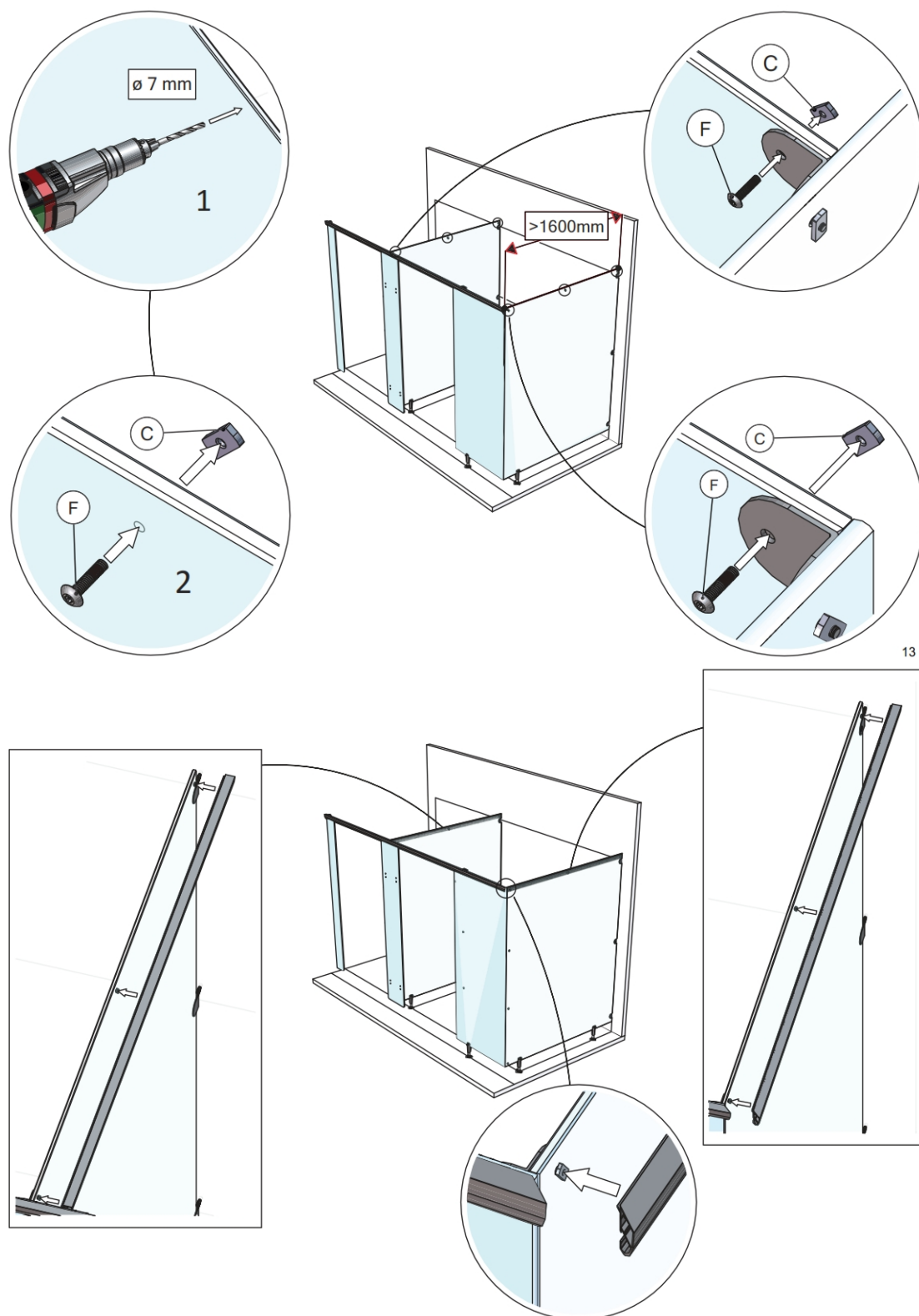
E: Sales@CubiclesDirect.co.uk

W: www.CubiclesDirect.co.uk

P: 10

If the Job Specific drawings show that a **STIFFENER POST AND FOOT** is required, please see **PAGE 20** of this Instruction Manual.

If the cubicles are over 1600mm deep, they will require a Headrail down the Partition panel, if this is the case, please follow these instructions.



T: 01709 388 338

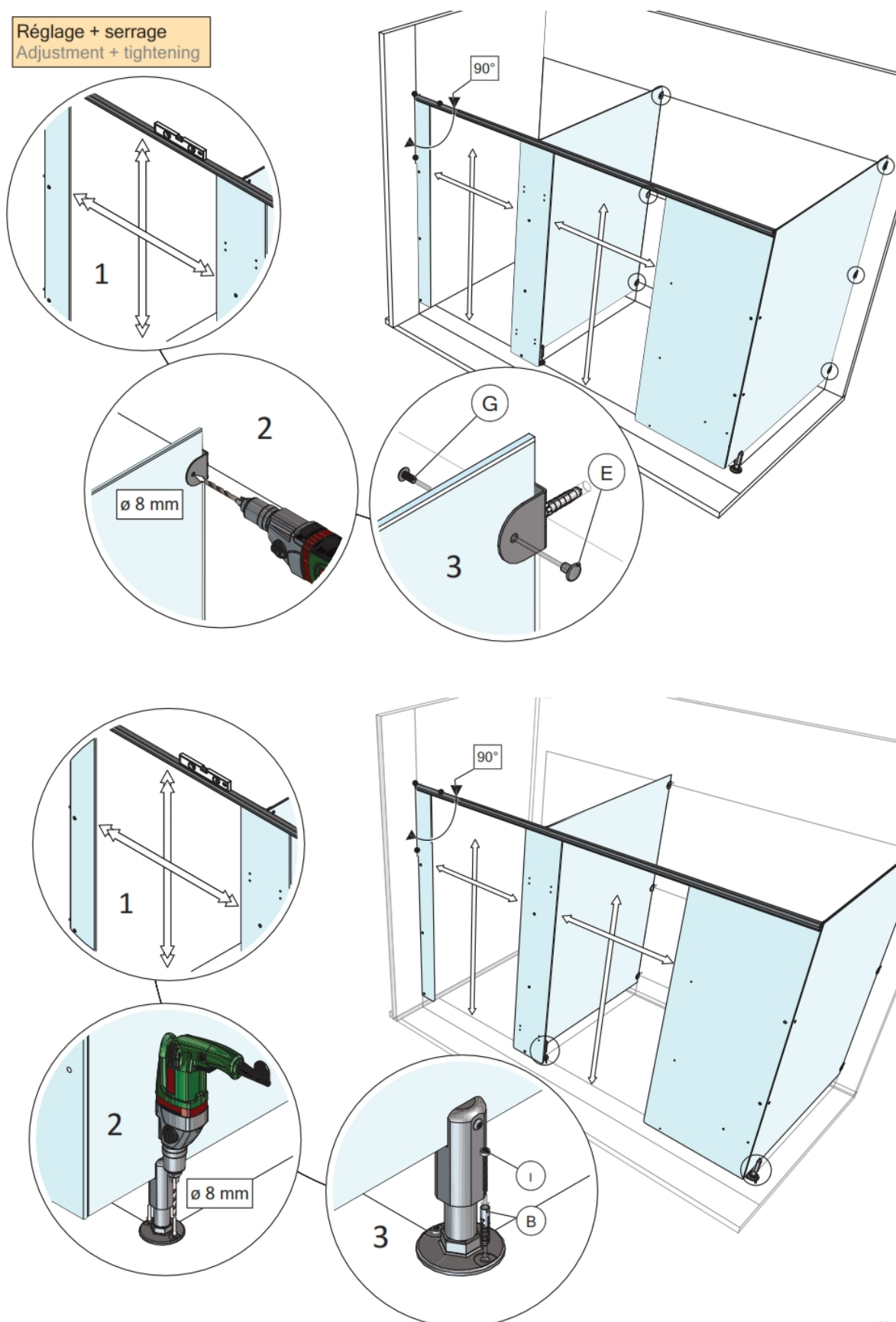
E: Sales@CubiclesDirect.co.uk

W: www.CubiclesDirect.co.uk

P: 11

Adjustments and Tightening

Réglage + serrage
Adjustment + tightening



11

T: 01709 388 338

E: Sales@CubiclesDirect.co.uk

W: www.CubiclesDirect.co.uk

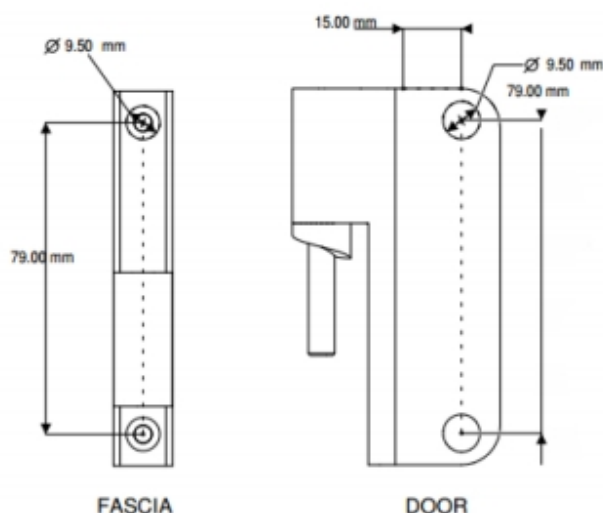
P: 12

Product Information Sheet

Hinge Assembly

CC13/CC18/CC21 HIDDEN HINGE

- The Hidden Hinges are through fixed to the fascia and wrap around the door.
- To ensure trouble free operation of the hinges it is important to be accurate and as vertical as possible to prevent binding of risers.
- When dismantling the hinge remove the M5 x 10 Screw from the hinge pin and pull apart.
- Position the wrap around hinge on the door mark holes and drill through with $\varnothing 9.50\text{mm}$ drill
- Secure wrap around hinge to door using the M6 T Nuts and M6 Althreads provided.
- Position and secure Fascia hinge.
- When fitting ensure the hinge pin is pointing downward.
- Lift door into place and test for smooth operation. Hinges are supplied in the 'Door Open' Position.
- When satisfied with operation replace M5x10 Machine Screw to hinge pin.



Part No.	Board Size
CC13HIDDEN	12 - 13 mm
CC18HIDDEN	18 - 19 mm
CC21HIDDEN	20 - 21 mm



T: 01709 388 338

E: Sales@CubiclesDirect.co.uk

W: www.CubiclesDirect.co.uk

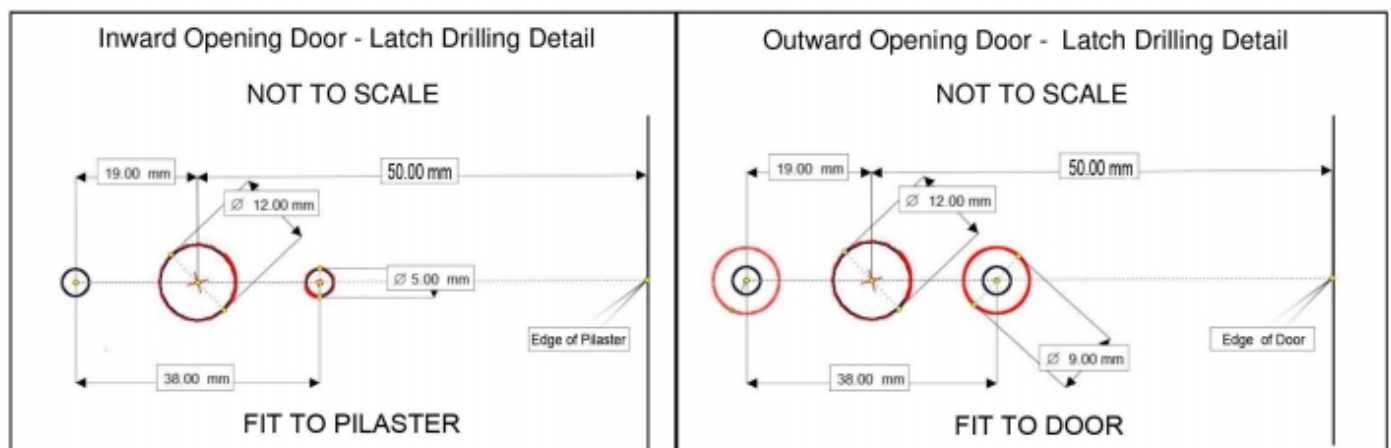
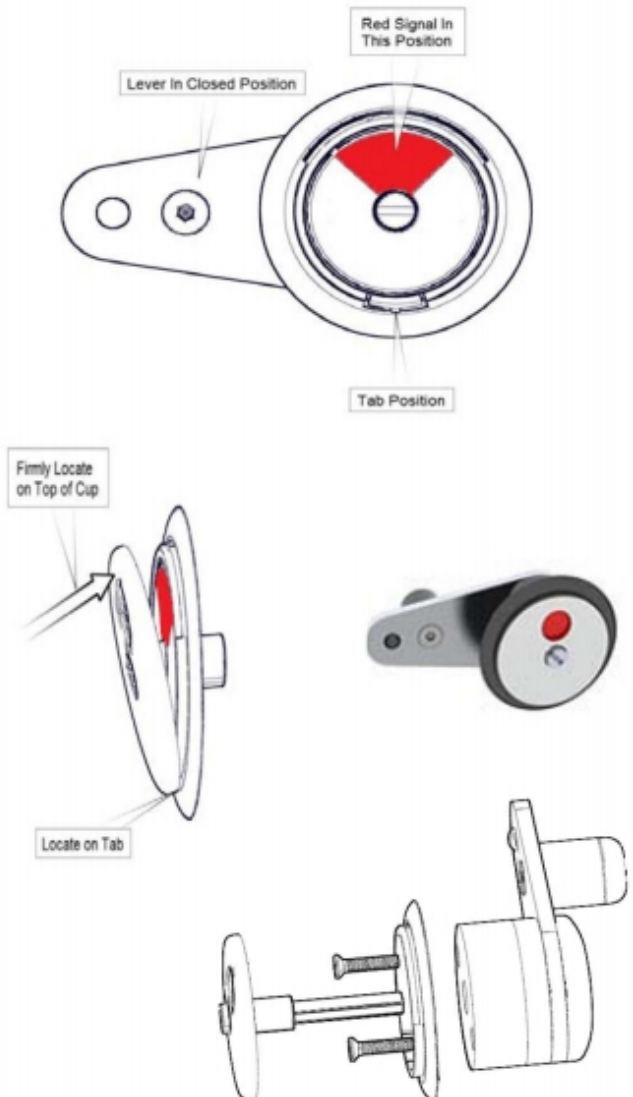
P: 13

DURHAM LATCH CLDL3 PILASTER MOUNTING INSTRUCTIONS

- Using the template provided mark out the hole positions and drill holes.
- Fit Latch Handle (**In Closed Position**) to door and position the Plastic Cup (**Tab downwards**); using fixing screws; tighten down (**Take care not to over-tighten**).
- Fit brass drive. Fit Signal with **RED** section upwards.
- Align the bottom of the Face Plate to the Cup Tab.
- Carefully but firmly locate on top rim of Cup lip.
- Ensure the Face Plate is positively and securely located. (Do not use excessive force)
- Check for free movement of Latch.
- Ensure the Signal indicates correctly – **WHITE 'OPEN' / RED 'CLOSED'**
- To remove Face Plate depress the Cup Tab using a small screwdriver and remove with care.

NOTE:

FOR INWARD OPENING DOOR FIT TO PILASTER.
FOR OUTWARD OPENING DOOR FIT TO DOOR.



T: 01709 388 338

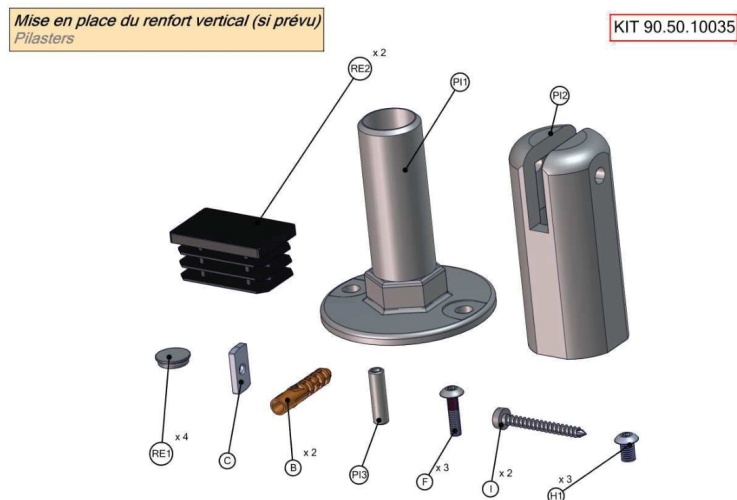
E: Sales@CubiclesDirect.co.uk

W: www.CubiclesDirect.co.uk

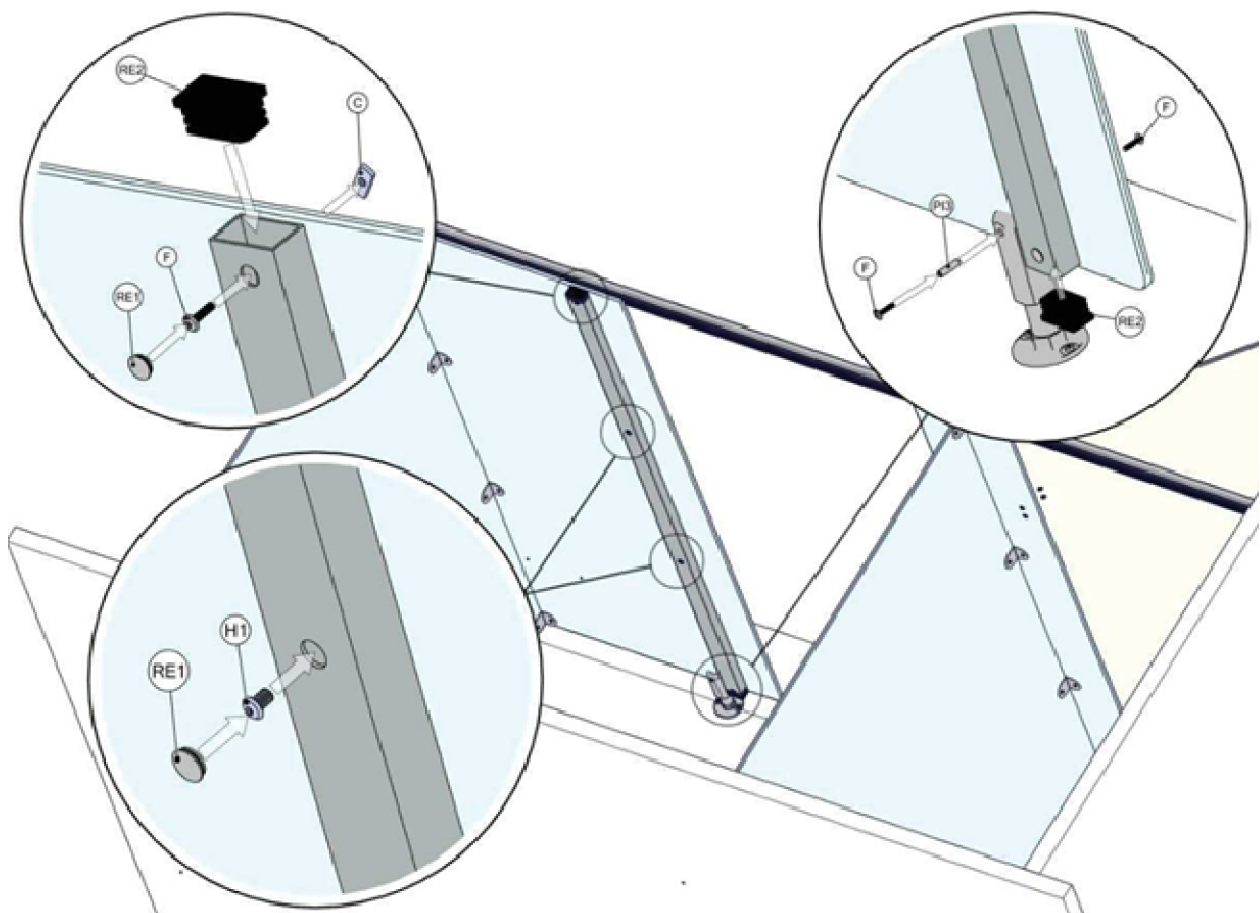
P: 14

Stiffener Post and Foot

On **PILASTERS** over a certain size, an addition Stiffener Post and Foot is required. These are detailed and noted on the Job Specific drawings. If these are required on your project, please open KIT 90.50.10035 and KIT 50.15.01850. This will include a foot, 2 end caps 1 stiffener post and fixings.



The **PILASTERS** have pre-drilled holes, line up the Stiffener Post with these holes and insert the 'F' Fixing into the top hole and the 'H1' Fixings into the lower 3 holes. Use the 'RE1' and 'RE2' Caps to finish as shown below



T: 01709 388 338

E: Sales@CubiclesDirect.co.uk

W: www.CubiclesDirect.co.uk

P: 15